



Play Mechanix™

TM

## Operator's Manual

Hardware and Software Setup and Registration Instructions  
for use with  
Big Buck Hunter Pro®  
and  
Big Buck Safari®

Part number 040-0001-02  
Rev. 05-09

LIFE LIKE  
VIOLENCE  
MILD

---

# Table of Contents

Safety .....	3
Operation Overview .....	4
Kit Inspection .....	5
Installation Overview .....	6
Hardware Installation .....	7
Card Reader .....	7
Tournament Sign .....	9
Ethernet .....	11
Cell Modem .....	12
Cell Modem Antenna .....	12
Wi-Fi Adapter .....	14
Software Installation and Setup .....	15
Restore DVD .....	15
Wi-Fi Setup .....	17
Game Registration .....	21
Online Operation .....	24
Tournament Guidelines .....	24
Tournament Rules .....	25
Collections and Fees .....	26
Accounting Guidelines .....	27
Prize Claim Guidelines .....	28
Troubleshooting .....	29
Software Installation .....	29
Card Reader .....	29
Tournament Sign .....	30
Cell Modem .....	30
Ethernet .....	31
Connection to CoinUp™ .....	31
Wi-Fi Adapter .....	32
Forms .....	33
Authorization Agreement for Automated Payments .....	34
Participating Operator Agreement .....	35
Operator Registration .....	41
Prize Claim .....	42
Cell Modem Service Agreement .....	45
Service and Sales – Contact Info .....	48

Product specifications subject to change without notice.

Federal patent, copyright and other intellectual property laws protect this game's content, devices and design.

Do not reproduce this document or any of its contents without express authorization of PlayMechanix®.

Installation of this kit product is solely your responsibility. PlayMechanix®, Raw Thrills® and Betson assume no liability for poor assembly or damage to your property.

# Safety

Please read these important notes before starting installation. Information applies to both operators and service personnel.

Arcade video games contain glass and fragile electronic devices. **USE APPROPRIATE CARE DURING TRANSPORT** and avoid rough handling. Before transporting a game, remove the tournament sign, which might otherwise break off.

**TURN OFF AC POWER AND UNPLUG CORD** before servicing or adjusting the game. Servicing while power is on can be hazardous to your health, damage components and void your warranty.

**GROUND GAMES.** Avoid electrical shock. Do not plug AC power in until the game is carefully inspected and properly grounded. Only plug into a grounded, three-wire outlet. Do not use a “cheater” plug. Do not cut off the ground pin on the line cord.

**HANDLE FLUORESCENT TUBE AND CRT WITH CARE.** A dropped fluorescent tube or CRT can implode, shattering glass eight feet or more from the site of breakage.

**ENSURE ALL CONNECTORS MATE PROPERLY.** If connectors don't slip in easily, don't force them. Keyed connectors only connect one way. Check for correct orientation.

**PLUG ALL POWER CORDS, DSL OR CABLE MODEM LINES INTO A SURGE PROTECTOR** to help prevent damage to sensitive electronic components.

**USE CARE WHEN HANDLING PC**, which contains sensitive components, such as a hard drive. Call your distributor before servicing PC components and ask about the PC warranty.

Failure to properly install the tournament kit may result in malfunction or damage. Read this manual before installing kit and operate it according to these instructions.

Should the tournament kit fail to work, turn off AC power and contact your local distributor. (Your warranty lasts 90 days from your purchase date.)

Damage to the modem or any component of your game during installation or use is your responsibility. PlayMechanix®, Raw Thrills™ and Betson assume no liability for harm to your equipment, including damage from static, power surges, lightning strikes or any other cause.

# Operation Overview

## Preparation

1. Open a bank debit account.
2. Fill out the CoinUp™ Authorization Agreement for Automated Payments. (see pg 34)
3. Read and sign the CoinUp™ Participating Operator Agreement. (see pg 35)
4. Read and sign the CoinUp™ Operator Registration Form. (see pg 41)
5. To become an authorized operator, fax the forms to 630-942-1073 or mail them to:  
PlayMechanix®  
800 Roosevelt Road, Suite D-103  
Glen Ellyn, IL 60137  
*Authorization occurs in just a few days. Operator cards and login info will arrive by mail.*
5. (Optional) Purchase the Cell Adder Kit (P.N. 3-14-00-00-00-000) to connect via cellular modem. Read, sign, and send the Cell Modem Service Agreement to PlayMechanix®.
6. (Optional) Purchase a supported Wi-Fi adapter to connect via wireless network. (see page 14 for list of supported adapters and network compatibility)

## Register Each Unit

Following installation, after reboot, you will be prompted to register the game. Use the gun to navigate through this process. If skipped, registration can also be done in the diagnostic menu by going to Online Menu—Game Registration Menu—Game Register. Login by inserting the operator card into the card reader. If the card is missing, log in manually by entering your operator ID number and PIN. Once logged in, follow the on-screen prompt to add or select a location and complete registration. See page 21, Game Registration, for more detailed steps to complete this process.

## Access CoinUp™ Operator Center

The CoinUp™ Operator Center tracks the performance of your entire tournament operation. For example, you can compare performance of different machines at the same location, or even across locations. Your pages also offer player statistics. To get online and view your pages, follow the steps below. From there, the site provides guidance. You follow easy prompts and navigate to the statistic, accounting, bookkeeping or performance data that you need.

1. Access the CoinUp™ Web site at [www.coinup.com](http://www.coinup.com).  
*The CoinUp™ Operator Center is the top page.*
2. In the top right corner of the page enter the account e-mail address.
3. Enter the password.
4. *Optional* To change login information, use the Profile tab.
5. Select locations or products to view.

**FCC COMPLIANCE.** Proper installation of this kit does not guarantee compliance with FCC requirements. On installations, you are solely responsible for FCC compliance.

# Kit Inspection

Unpack materials and check for obvious signs of damage. Use the lists below to ensure kit is complete.

## *Big Buck Hunter Pro® Ethernet Kit # 3-12-00-00-00-000*

Part Name	Number	Qty	Part	Number	Qty
Card Reader USB Cable	325-00011-00	1	Card Reader Decal	606-00052-01	1
Card Reader	813-00005-01	1	System Restore DVD	041-00001-01	1
Card Reader Mount Plate	600-00060-01	1	Operation Manual	040-00001-02	1
Tournament Sign	800-00025-01	1	Purple Tournament USB dongle	301-00005-01	1
LED Array	810-00070-01	1	Modem Agreement Form	Part of manual	1
Base Bottom and Front	600-00058-01	1	Nuts, 10-32	113-0010-00	5
Sign Power Cable	H-0003	1	Screws, #8 x 3/4	112-00003-00	4
Plastic Sign	603-00021-01	1	Torx® wrench T-25	wrench	1
Base Top and Back	600-00057-01	1	Torx® wrench T-15	wrench	1

## *Big Buck Safari® Ethernet Kit # 3-13-00-00-00-000*

Part name	Part #	Qty	Part name	Part #	Qty
Card Reader USB Cable	325-00011-00	1	Card Reader Decal	606-00052-01	1
Card Reader	813-00005-01	1	System Restore DVD	041-00001-01	1
Card Reader Mounting Plate	600-00060-01	1	Operation Manual	040-00001-02	1
Tournament Sign	800-00025-01	1	Modem Agreement Form	Part of manual	1
LED Array	810-00070-01	1	Nuts, 10-32	113-0010-00	5
Base Bottom and Front	600-00058-01	1	Screws, #8 x 3/4	112-00003-00	4
Sign Power Cable	H-0003	1	Torx® wrench T-25	wrench	1
Plastic Sign	603-00021-01	1	Torx® wrench T-15	wrench	1
Base Top and Back	600-00057-01	1			

## *Big Buck Hunter® Pro and Big Buck Safari® Cell Modem Adder Kit # 3-14-00-00-00-000*

Part name	Part #	Qty	Part name	Part #	Qty
USB Modem extender cable	325-00011-00	1	Operation Manual	040-00001-02	1
Antenna & cable Assembly	800-00026-01	1	Mounting Velcro® strips		1
Modem: AT&T Aircard 875U		1			

## *Big Buck Hunter Pro® Base Kit # 3-15-00-00-00-000*

Part Name	Number	Qty	Part	Number	Qty
Card Reader USB Cable	325-00011-00	1	System Restore DVD	041-00001-01	1
Card Reader	813-00005-01	1	Purple Tournament USB dongle	301-00005-01	1
Card Reader Mount Plate	600-00060-01	1	Operation Manual	040-00001-02	1
Card Reader Decal	606-00052-01	1	Torx® T-27 security wrench	wrench	1
Ethernet Cable		1			

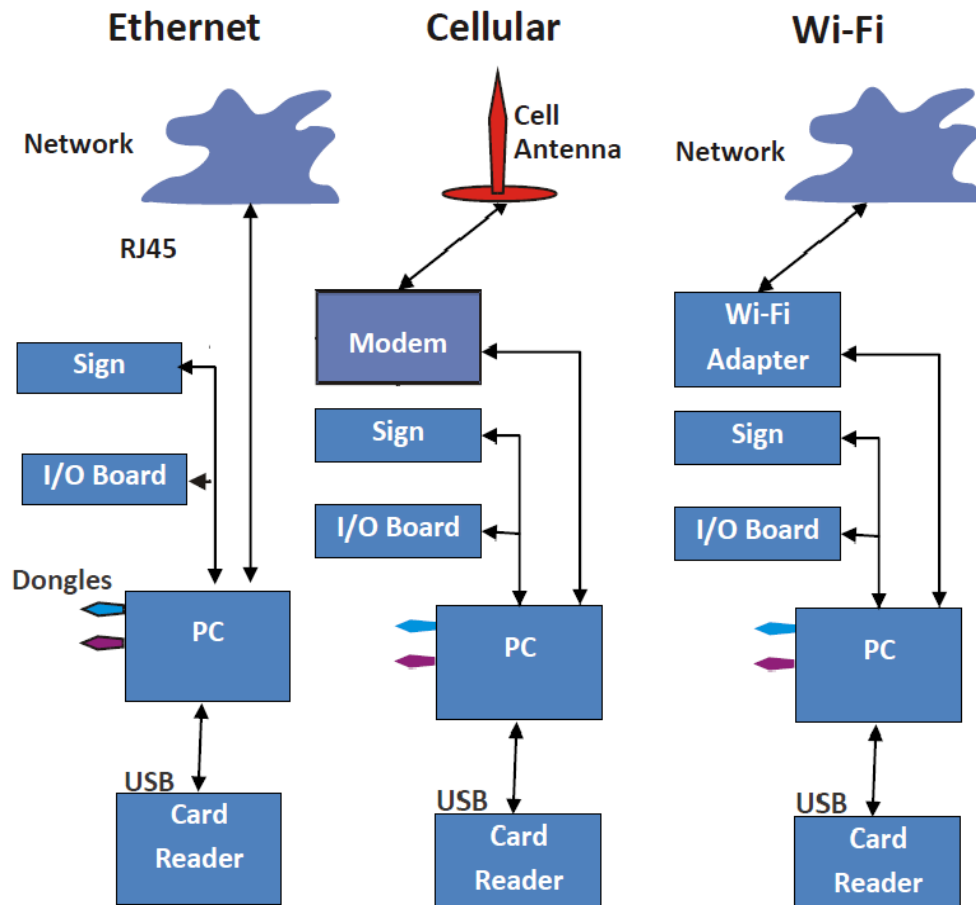
## *Big Buck Safari® Base Kit # 3-16-00-00-00-000*

Part Name	Number	Qty	Part	Number	Qty
Card Reader USB Cable	325-00011-00	1	System Restore DVD	041-00001-01	1
Card Reader	813-00005-01	1	Operation Manual	040-00001-02	1
Card Reader Mount Plate	600-00060-01	1	Torx® T-27 security wrench	wrench	1
Card Reader Decal	606-00052-01	1	Ethernet Cable		1

# Installation Overview

## Layout

There are three setups for the machine depending on the method used for communication with CoinUp™: Ethernet, Cell modem, or Wi-Fi.



## Installation Process

1. Install Card Reader (see page 7)
2. (Optional) Install Sign (see page 9)
3. Install an Internet Connection
  - For Ethernet (see page 11)
  - For Cell Modem (see page 12)
  - For Wi-Fi (see page 14)
4. (Big Buck Hunter Pro Only) Connect New Dongle
5. Install Software from the kit DVD (see page 15)
6. Register the game at [www.coinup.com](http://www.coinup.com)

# Hardware Installation

**THE TOURNAMENT SIGN** is fragile. Before moving the cabinet, remove the sign. Otherwise, a doorframe or overhead beam could shear off the sign. Installation consists of on-location procedures. The game can be moved after installation, but the network or cell antenna must first be uninstalled. If moving the game to a new address, report site change to CoinUp™ services (see pg 48 for contact info).

## Required Tools:

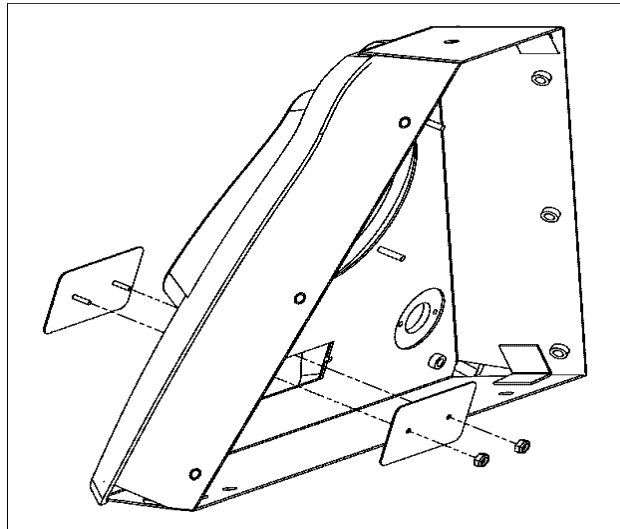
- Center punch or awl
- Electric drill
- 5/8-inch hole bit (not over 4 inches long)
- One-inch hole saw bit for drill
- Pencil or marker that contrasts with cabinet roof
- Phillips screwdriver
- 7/32-inch nut driver (SpinTite®) or wrench
- T-15 tamperproof Torx® wrench

There are two PC models used in Big Buck Hunter® Pro games. In versions of Big Buck Hunter Pro® shipped from 10/2007 onward, a fuse/watchdog board is included to improve power distribution. This is used in games equipped with Dell PCs only.

## Install Card Reader

1. Identify the card reader and plate (one piece) and the card reader decal.
2. Turn off AC power.
3. Unplug the power cord.
4. Open the back door.
5. Note that the card reader cover on the front of the cabinet consists of four parts: two 6-32 nuts, an inner cover plate and an outer cover/stud plate
6. Inside the cabinet, above the coin door, remove two 6-32 nuts, located on the back of the bezel.
7. From the back of the bezel, remove the inner cover plate.
8. From the front of the bezel, remove the outer cover plate.
9. Discard the removed plates.
10. On the bottom of the monitor bezel, remove the two screws.  
*Save the screws for reassembly.*
11. From the speaker bezel, just below the CRT, remove four T-27 screws.  
*Save the screws for reassembly.*
12. From the button housings, disconnect the START switches and light bulbs.
13. Remove the speaker bezel and set it aside for reassembly.
14. Plug the card reader cable into the card reader.
15. Slide the other end of the cable through the rectangular cutout.  
*Ensure the USB connector faces upward.*

16. Drop the card reader into the rectangular cutout.  
*The speaker bezel and metal plate on the cabinet should tightly sandwich the reader mounting plate.*



#### **Mounting the Card Reader**

17. Reconnect the START switches and light bulbs to the button housings.
18. Mount the speaker bezel to the front of the cabinet.
19. Insert and tighten the four saved mounting screws into the speaker bezel.  
*The bezel now secures the card reader to the cabinet.*
20. Insert and tighten the two mounting screws into the monitor bezel.
21. Connect the card reader cable to a USB port on the PC.
22. In the center-front of the cabinet, find the mounting position for the decal.  
*The decal goes above the coin door and below the card reader.*
23. Remove the backing from the decal.
24. Apply the decal to the cabinet.



#### **Card Reader Decal**

25. Close the back door.
26. Plug in power cord.
27. Turn on AC power.

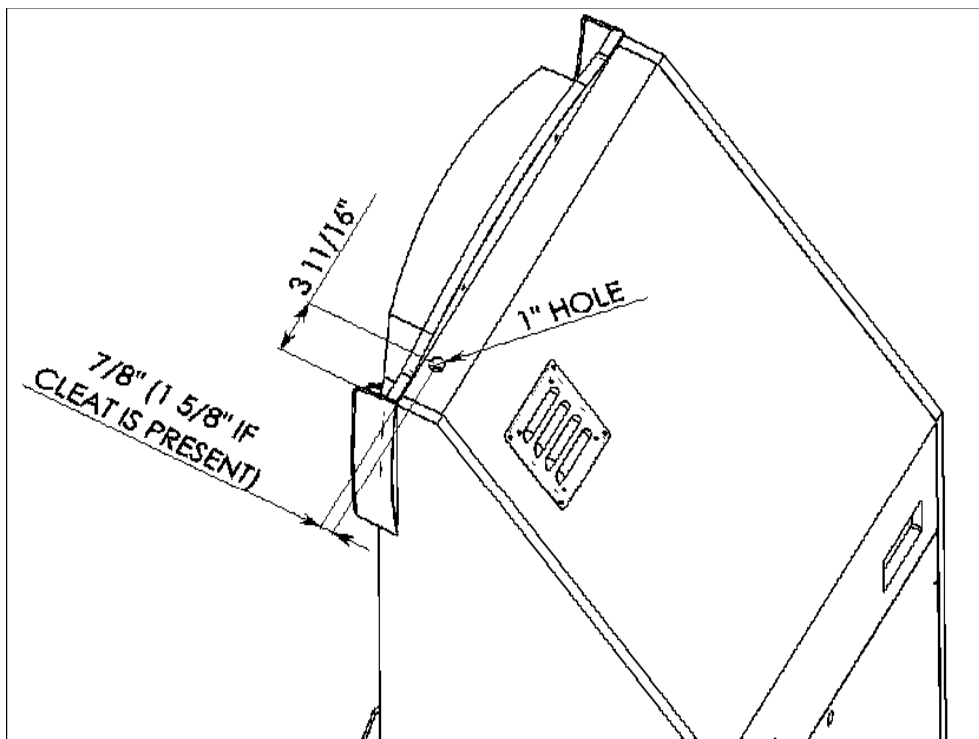


## Install Tournament Sign (Optional)

### **IMPLOSION POSSIBLE.**

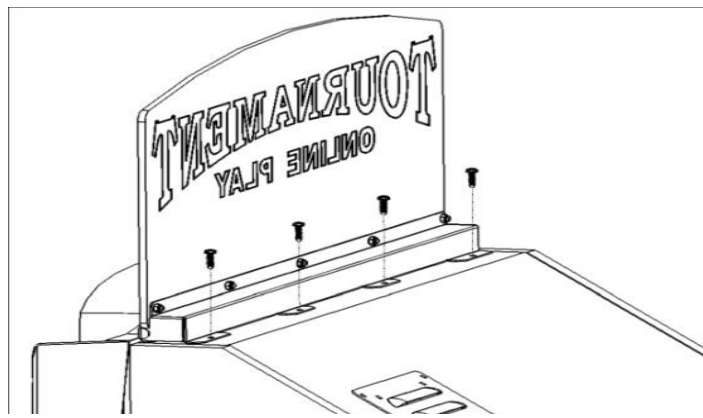
Be extra careful when drilling into the cabinet roof. The CRT is only a few inches below the roof. If the CRT is nicked by a power tool, it may implode. An imploding CRT throws sharp glass shards up to eight feet. These glass shards can cause serious cuts or fatal injuries. Avoid this hazard by using a four-inch or shorter drill bit. Wear safety glasses.

1. Turn off AC power.
2. Unplug the power cord.
3. From kit, set aside the plastic sign with metal base and five sign-mounting screws.
4. Position sign base on roof, fitting loosely between the sidewalls.  
*On cabinets with a small brace just behind the front panel, move the base as close as possible to the brace.*  
*On cabinets without a brace, move the base against the front cabinet wall.*
5. With a pencil or marker, mark the position for the sign-mounting holes through the holes themselves.
6. Set aside the sign-mounting base.
7. Center punch the sign-mounting holes.



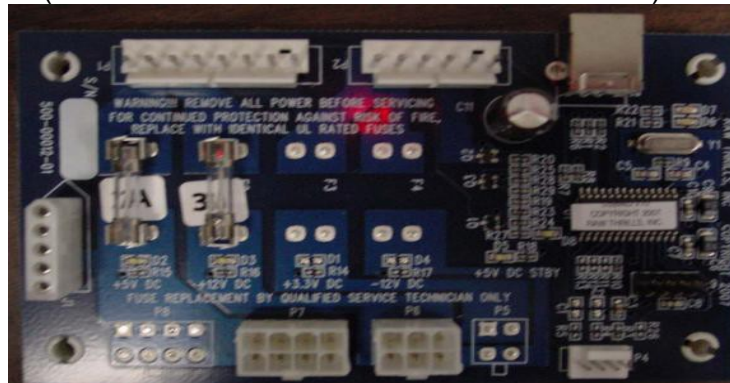
**Sign Cable Hole Location**

8. Mark the position for the sign cable hole.
9. Center punch the sign cable hole.
10. Using a one-inch hole bit, cut the hole for the 12-volt power cable.  
*Don't allow the bit to penetrate more than four inches into the cabinet.*
11. Slide the sign cable down the one-inch hole and into the cabinet.  
*The cable is a Y-cord and carries 12V from the power supply.*



**Mounting Sign to Roof**

12. Using screws from the kit, fasten the sign base to the cabinet roof.
13. Open the back door.
14. For Big Buck Hunter® Pro games equipped with a Microtel® PC: On the rear of the PC there is a white, five-pin connector. This powers the I/O Board. When facing the back of the cabinet the connector is on the right. (The five-pin connector is on an option card.)
15. On the PC, connect the sign power cable. Plug the cable into the white, five-pin connector. (The same connector where the I/O cable was.)



**Five-Pin Power Connector on left of photo**

16. For Big Buck Hunter® Pro and Big Buck Safari® games equipped with Dell® PCs: inside the cabinet find the fuse/watchdog board and connect the sign power cable to the open five-pin connector.
17. Close the back door.
18. Plug in power cord.
19. Turn on AC power.

### Removing Tournament Sign

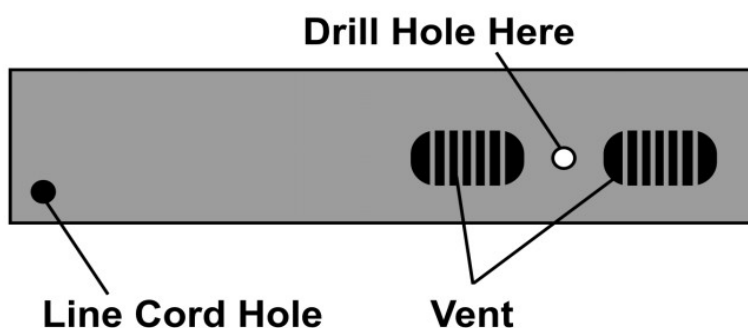
When the cabinet needs to be moved, the sign should be removed first to prevent it from being accidentally sheared off the cabinet.

1. Turn off AC power.
2. Unplug the power cord.
3. Open the back door.
4. At the PC, disconnect the sign power cable.
5. From the sign power cable, disconnect the I/O Board power connector.

6. With the T-15 tamper proof Torx® wrench, remove the sign from the cabinet roof.
7. While removing sign, pull the cable from the cabinet.  
*Save the hardware for reinstallation.*
8. If game uses Ethernet, locate the Ethernet cable inside the cabinet.  
*It connects to the RJ45 Ethernet jack on the back of the PC.*
9. Free the Ethernet cable from the game unit.
10. If game uses cell modem, disconnect the antenna cable from the modem jack.
11. Remove the antenna from the cabinet.  
*If possible, leave the Velcro® strips on the cabinet and antenna for reinstallation.  
If not, save the strips for reinstallation.*
12. Shut the back door.
13. Move the cabinet to its new location.

### Install Ethernet Cable

1. Set up DSL or cable modem service through an ISP.
2. Turn off AC power.
3. Unplug the power cord.
4. Center punch a hole for the Ethernet cable.  
*Locate the hole in the bottom-back panel below the 12.5" high door.  
The hole location is midway between two vents on the right side of the panel.  
Vertically space the hole some seven inches up from the bottom of the panel.  
Horizontally space the hole some nine inches from the right side of the panel.*
5. Using a 5/8-inch drill bit, drill the cable hole.
6. Run the Ethernet cable to the cabinet.
7. Route the Ethernet cable through the cabinet hole.
8. Open the back door.
9. Inside the cabinet, dress the Ethernet cable away from other cables and metallic parts.
10. Locate the RJ45 Ethernet jack on the back of the PC.

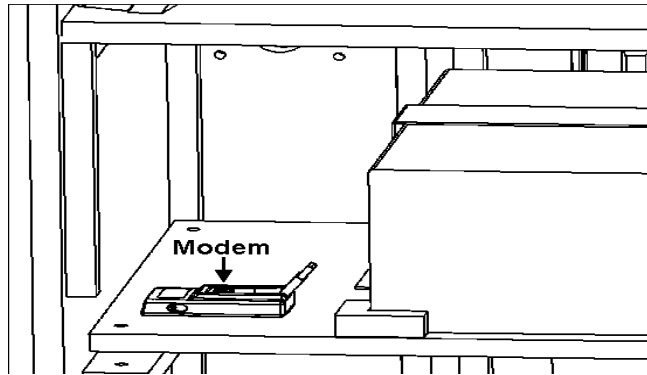


11. Connect the Ethernet cable to the RJ45 jack on the PC.
12. Close the back door.
13. Plug in power cord.
14. Turn on AC power.

## Install Cell Modem

These instructions only apply to *Cell Modem Adder kit # 3-14-00-00-00-000*.

1. Set aside the modem, Velcro® strips and extender cable.
2. Turn off AC power.
3. Unplug power cord.
4. Open the back door.
5. Remove the adhesive protection from one side of the Velcro® strips.  
*Keep the Velcro® strips together.*
6. Place them to the left of the PC on the shelf to identify the location.
7. Lift the modem and stick one side of the strips to the shelf beneath the modem location.
8. Remove the adhesive protection from the free side of the Velcro® strips.



9. Press the modem to the sticky side of the Velcro® strips.  
*Ensure that the modem bonds solidly.*
10. In the kit, get find the modem extender cable.
11. Connect the modem cable to a USB port on the PC.
12. Connect the other end of the modem cable to the cell modem.
13. (Optional) Install Cell Modem Antenna (see below)
14. Close the back door.
15. Plug in power cord.
16. Turn on AC power.

## Install Cell Modem Antenna

*A cell modem antenna is optional. However, an antenna will help insure the best possible connection.*

Note that the antenna cable is part of the antenna and these instructions cover mounting it to the cabinet roof. However, other locations may provide better reception. A wall, near a window, etc.

### Location Guidelines

- Keep the antenna vertical.
- Mount the antenna as high as possible.
- Avoid mounting an antenna near power lines.
- Avoid areas where people could trip on a cable.
- Don't tempt vandals: If possible, keep the antenna out of plain sight.
- With a CDMA cellphone, can check locations for best signal strength.

### **IMPLOSION POSSIBLE.**

*Be extra careful when drilling into the cabinet roof. The CRT is only a few inches below the roof. If the CRT is nicked by a power tool, it may implode. An imploding CRT throws sharp glass shards up to eight feet. These glass shards can cause serious cuts or fatal injuries. Avoid this hazard by using a four-inch or shorter drill bit. Wear safety glasses.*

### **USE VELCRO—NOT ADHESIVE.**

*Only use Velcro® strips for mounting antenna. Do not use the factory-applied, permanent adhesive backing. Doing so may damage the antenna and the cabinet when removing the antenna during a cabinet relocation. The warranty does not cover this sort of damage.*

1. Set aside the antenna and the Velcro® strips from the kit.
2. Turn off AC power.
3. Unplug power cord.
4. Open the back door.
5. On the slanted roof, center punch the antenna cable hole.
6. Using a 5/8-inch hole bit, drill the hole for the antenna cable.  
*Avoid implosion. Read the warning above.*
7. Slide the antenna coaxial cable down the cable hole and into the cabinet.
8. Remove the protective strip from one side of the Velcro® strips.  
*Keep the hook and loop Velcro® strips together.*
9. Mount the sticky side of the Velcro® strips to the bottom of the antenna.  
*You can apply the Velcro® sticky side to the adhesive on the antenna base. Do not let the antenna adhesive come into contact with the cabinet. The Velcro® must separate the antenna adhesive and the cabinet.*
10. Remove the adhesive protection from the free side of the Velcro® strip.
11. Mount the free side of the Velcro® strip to the roof.
12. Dress the antenna coaxial cable away from other cables and metallic parts.
13. Connect the antenna cable plug to the jack on the modem.
14. Close the back door.
15. Plug in power cord.
16. Turn on AC power.

## Install Wi-Fi Adapter

- Obtain one of the supported USB Wi-Fi adapters listed in the chart below.  
**Do NOT install software that came with adapter.**  
**The game already runs appropriate software.**

ADAPTER MODEL	Supported Networks	Encryption Type / Compatible?							
		Diabled None	WEP	WPA-Personal + TKIP encryption	WPA-Personal + AES encryption	WPA2-Personal (AES encryption)	WPA2-Mixed (TKIP & AES)	WPA Enterprise	RADIUS
Linksys WUSB54G (version 4)	802.11b/g	YES	YES	YES	YES	NO	NO	NO	NO
Rosewill RNX-G1 RNX-G1W	802.11b/g	YES	YES	YES	YES	YES	YES	NO	NO
Netgear WG111 (version 2)	802.11b/g	YES	YES	YES	YES	YES	YES	NO	NO
D-Link DWA-140 (version 81)	802.11b/g	YES	YES	YES	YES	YES	YES	NO	NO
Belkin F5D8053 (version 3000)	802.11b/g/n	YES	YES	YES	YES	YES	YES	NO	NO
Linksys WUSB600N (version 1.0)	802.11b/g/n	YES	YES	YES	YES	YES	YES	NO	NO

**Supported Wi-Fi Adapter Compatibility Chart**

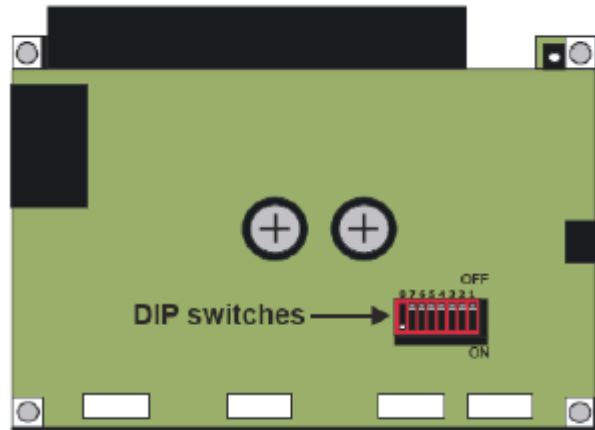
- Turn off cabinet AC power.
- Unplug power cord.
- Open the back door.
- Mount Wi-Fi adapter inside cabinet as high as possible using Velcro®.  
*If necessary, use a USB extension cable to connect adapter to PC. Most supported adapters come with one.*
- Connect cable to a USB port on the PC.
- Close back door.
- Plug in power cord.
- Turn on AC power.
- Complete Wi-Fi software setup (see pg 17).  
*Game will not connect properly to CoinUp™ until setup is successfully completed.*

# Software Installation and Setup

## Install Tournament Software

### Set DIP Switches

1. Turn off AC power.
2. Unplug the power cord.
3. Open the back door.
4. Locate the JAMMA I/O Board on the right side of the cabinet near the PC.
5. Locate the red DIP-switch bank. Switch 8 is the leftmost switch.



*DIP Switch Location on I/O Board*

6. Turn off switches 1 through 7.  
*With a pen point, you can slide the switch tabs into the "off" position.*
7. Turn on switch 8.

### Install Software

1. Plug in power cord.
2. Turn on AC power.
3. Insert the DVD into the DVD drive in the PC.
4. Connect Dongle(s)  
*For Big Buck Hunter® Pro - Insert the new purple CoinUp™ dongle into a USB port in the PC. (Don't remove the blue dongle.)*  
*For Big Buck Safari® - Keep the Safari dongle connected. No new dongle is required.*
5. Reboot the PC. The system restoration process takes place, after which the game prompts you to remove the DVD and reboot.
6. Remove the DVD from the PC and store in a safe place.

### Reset DIP Switch

1. Turn off AC power.
2. Unplug the power cord.
3. Inside the cabinet, locate the JAMMA I/O Board and identify the red bank of eight DIP switches.
5. Turn off switch 8 on the left side. *Now all switches should be off.*
6. Close the back door.
7. Plug in power cord.
8. Turn on AC power.

## Verify DIP Switch Settings in Diagnostics Mode

1. Enter Diagnostics mode by pressing the TEST service button.
2. Using either gun pump and trigger to navigate choices and the right Start button to select highlighted choice.
3. Select SYSTEM INFORMATION MENU—DIP SWITCH SETTINGS



*Main Menu*

4. Verify DIP Switch settings.



*Correct Settings for Normal Operation*

After making changes to DIP Switches or other settings or software, recalibrate the guns according to instructions in the original game manual.



## Wi-Fi Software Setup

The following procedure is required to configure your Wi-Fi adapter for communication with CoinUp™.

*Do NOT install software that came with adapter.*

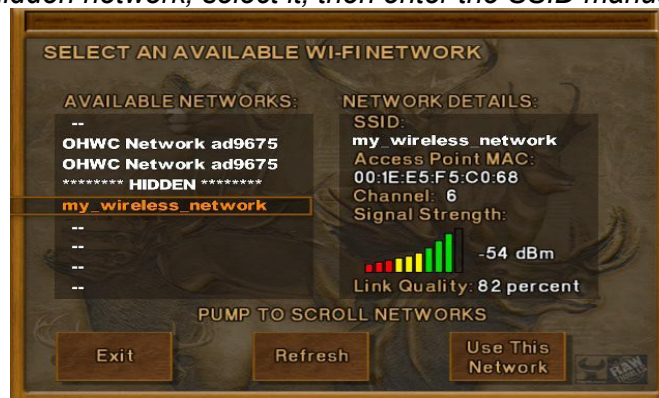
### Preparation

1. Log into wireless access point or router.
2. Write down Wi-Fi network information on a sheet of paper:
  - SSID (network name)
  - Broadcast Channel
  - Encryption Type (WEP 64-bit, WEP 128-bit, WEP 256-bit, WPA-PSK + TKIP encryption, WPA-PSK + AES encryption, WPA2)
  - Encryption Key (Different encryption types require different types of keys. See chart below for examples)

Encryption Type	Key Details	Example
WEP (64-bit)	10 hexadecimal characters	5E2C6D4E24
WEP (128-bit)	26 hexadecimal characters	326C2D335A5A48386B5D763954
WEP (256-bit)	58 hexadecimal characters	373A786E625676266E7156345741 312F4433427C48536E7A695E7C3E75
WPA-PSK (AES) WPA-PSK (TKIP) WPA2 (AES + TKIP)	ASCII pass phrase between 8-63 characters in length (Upper case letters, lower case letters, numbers and symbols allowed)	\$3CurE_pA\$sPhRa\$e

### Network SSID

1. Enter Diagnostics mode.
2. Select Online Menu—Wi-Fi Menu—Wi-Fi Setup.
3. Select Scan Networks to look for nearby Wi-Fi networks.  
*Depending on settings, networks may not broadcast their SSID. These networks are displayed as \*\*\*HIDDEN\*\*\* To use a hidden network, select it, then enter the SSID manually when prompted.*



**List of Available Networks**

4. Scroll through the detailed list to locate your networks.

5. If network does not appear in list, Exit to previous menu and select Enter Manually, then enter SSID, encryption type, key and broadcast channel.
6. Select Use this Network to continue.

### Encryption Type

1. From list of encryption types, scroll through and highlight appropriate type.



**List of Encryption Types**

2. Select Use This Encryption to continue.

### Encryption Key

*If Encryption Type is Disabled/Open, skip this section, as there is no key.*

1. On Enter WPA Key screen, enter access point or router WPA Key (from information gathered during preparation on pg 17)  
*Select yellow < and > symbols to switch between letters, numbers and symbols.  
 On the letters page, select UPPER or lower to change case of letters*



**WPA Key Selection Screen**

2. Select OK to continue.

## Broadcast Channel

*This applies only if SSID was entered manually.*

1. Scroll through list to highlight appropriate channel.



**Broadcast Channel Selection Screen**

2. If unsure of correct broadcast channel, select Auto.
3. Select Use This Channel to continue.

## Confirm Settings

1. Note SSID, Encryption Type, Encryption Key and Channel on confirmation screen.



**Wi-Fi Confirmation Screen**

2. If information is incorrect, select Start Over to return to Wi-Fi Menu.
3. If information is correct, select Save Settings to store information.  
*The game automatically reboots.*

## Wi-Fi Details Status Messages

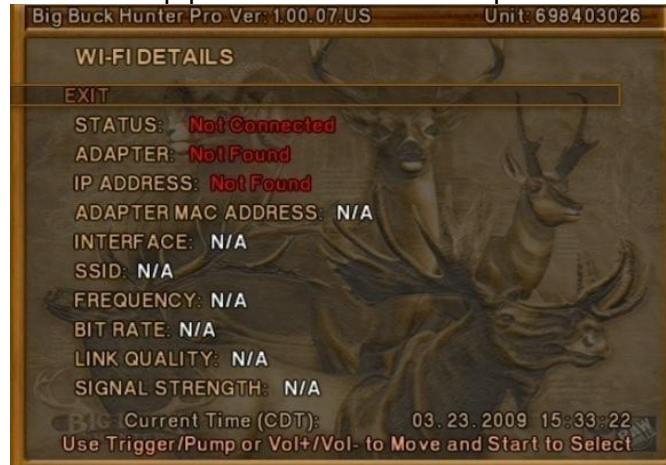
After reboot, game attempts to connect to wireless network using saved information. To see real-time connection status, enter Diagnostics Mode and select Online Menu—Wi-Fi Menu—Wi-Fi Details. Below are the possible status messages. See Troubleshooting for further instructions.

### Connected

Game has located wireless access point or router and successfully obtained an IP Address. Game is online and ready to be registered with CoinUp™.

### Not Connected

The game is neither connected to a Wi-Fi network nor attempting to connect. Either no Wi-Fi adapter is connected to the PC, or Wi-Fi Setup procedure was not completed.

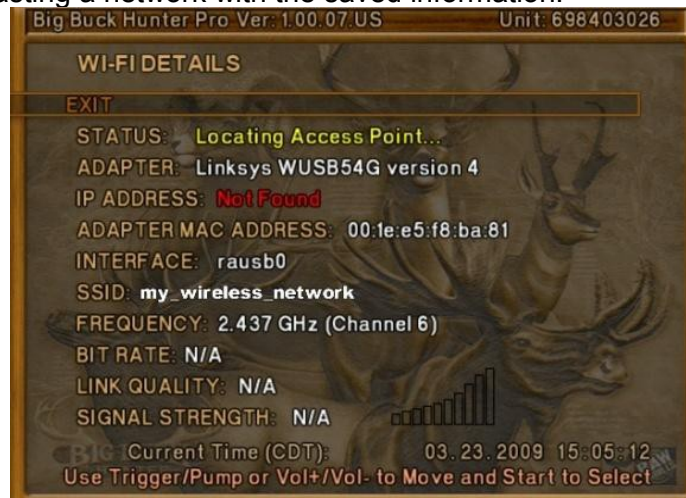


**Wi-Fi Not Connected**

1. If Adapter status is Not Found, ensure a supported Wi-Fi adapter with correct version is connected.
2. If Adapter status shows the name of the adapter, ensure SSID status is also correct.

### Locating Access Point...

A Wi-Fi adapter is connected to the PC and network information was saved. The game is trying to find an access point broadcasting a network with the saved information.



**Locating Access Point**

If game remains in this status more than 5 minutes, either the network information entered was incorrect, or the game cannot communicate with the access point.

1. Reboot game and return to Wi-Fi Details again.
2. If another 5 minutes pass with the same status, return to Wi-Fi Setup and re-enter network information.
3. Check network signal strength by scanning for available networks in Wi-Fi Setup.
4. If signal is weak, unplug AC power and move cabinet closer to the access point.

### Obtaining IP Address

Game has found wireless access point or router and is acquiring an IP Address.



### Obtaining IP Address

1. If this status displays for more than 5 minutes, reboot game.
2. Recheck status after reboot.

### Game Registration

After the reboot following CoinUp™ installation, the software will prompt you to register your location. Registration can also be found by entering Diagnostic mode, and going to Online Menu—Game Registration Menu—Game Register.

1. At the prompt, insert your CoinUp™ operator card.



*If operator card has not yet arrived, press START to login manually. Enter ID and pin when prompted.*

- The Select A Location screen appears  
The game downloads your locations from the CoinUp™ server database automatically.



**Location List**

- Scroll through the list to highlight the appropriate location.
- Select Use This Location to continue.
- If the location is not on the list, select Add New Location to continue.
- When adding a new location, select each letter and then click OK to confirm.



**Add New Location by Choosing Letters**

- After location is chosen, a confirmation screen is displayed.
- Finally, the game checks for updates and messages, then enters Attract mode.
- Cell Modem and Wi-Fi users: Check signal strength indicator. In Attract Mode, look for a five-segment bar graph. You should see the graph in the bottom-left corner of your screen. (The indicator appears on all Attract Mode screens.)



Broadband-connected games also display the graph. Broadband signal strength is constant. When connected, it displays five green bars. When disconnected, the graph shows no bars.

## Checking the Connection

### Cell Users

1. Enter Diagnostic mode by pressing the TEST service button.
2. Select Online Menu—Connection Details—Cell Modem Details.
3. Note the signal strength, which appears as a fraction with a 5 in the denominator.  
*A strong signal is 5/5; a weak signal is 1/5 or 2/5.*
4. If strength is below 3/5, reposition the cell antenna and recheck signal strength.

### Wi-Fi Users

1. Enter Diagnostic mode by pressing the TEST service button.
2. Select Online Menu—Wi-Fi Menu—Wi-Fi Details
3. Note the signal strength. More green bars is better.
4. Note the link quality. A higher percent is better.
5. If either link quality or signal strength is low, try repositioning the adapter.

### All Users

1. Enter Diagnostic mode by pressing the TEST service button.
2. Select Online Menu—Test Connection.
3. Watch as the game confirms that:
  - It can obtain a valid IP address.
  - It can contact the CoinUp™ server.
  - It can access the CoinUp™ database.
  - It can access the Coinup™ file server.
4. The right side of the screen reports test results: SUCCESS or FAILURE.  
*The only acceptable result is four SUCCESS indications.*  
*If any test results in FAILURE, see the Troubleshooting chapter or call your distributor.*  
*See pg 48 for contact information.*



**Successful Test Connection**

# Online Operation

## Tournament Guidelines

Tournament-enabled games automatically run CoinUp™-sponsored tournaments throughout the year. Ensure tournament access by following these guidelines.

Ensure game remains connected to the Wi-Fi, cellular, or Ethernet network.

Verify online play is enabled in the diagnostics menu at:

Online Menu—Game Registration Menu—Current Registration Status

The *Online Permissions* field should indicate: *ALL ONLINE PLAY ENABLED*.

Check for active tournaments in the diagnostics menu at Online Menu—Show Tournaments.

Watch for the Tournament Spotlight screen during attract mode. This screen details current or upcoming tournaments with dates, prizes and rules.

The Spotlight screen shows tournament names, dates, remaining days, etc. and carries an optional custom promotion banner. The banner can be created in the Diagnostics menu and might display the tournament name, date and a picture of the top prize. The Spotlight screen first appears before the tournament start date and runs through the tournament.

Players can enter the tournament by selecting Tournament from the game selection screen. Players are prompted to insert a tournament entry fee.

For the tournament score to count, a player enters login data. Players can purchase and use Big Buck Hunter Pro® theme cards for fast and accurate logins.

Hunting conditions change each day at midnight. On every active tournament game, conditions throughout the day are identical.

Tournament-ready games communicate with CoinUp™ servers daily to transfer data back and forth. On the game screen, tournament leaderboards display updated scores.

The hard drive stores data about the game location. If the hard drive is removed from the PC, important data will be lost. Do not swap or replace drives without authorization from CoinUp™ management.

Keep game location data accurate. Before moving a game, have the PC communicate with the server.

State laws about tournament play differ. Check local laws before starting a tournament.

In states where tournaments are illegal, opt out of CoinUp™-sponsored tournaments by contacting CoinUp™ services (see pg 48 for contact info).

You are liable for any penalties as a result of offering tournaments in jurisdictions where they are illegal.



## Tournament Rules

To enter a tournament, the player goes to the selection screen, selects Tournament Play, inserts the entry fee and logs in using a Player Card or entering data with the rifle. Login data includes the player's real name, login ID and birth date (mm/dd). CoinUp™ requires this data to verify winners.

**REAL NAMES** are required for the system to validate a score. However, players can use any values for login ID and birth date. PlayMechanix® encourages players to use cellphone numbers for login IDs, which are easier to remember.

**INVALID NAMES**, profanity, and vulgarity are automatically removed from leaderboards. A player who uses another player's login data will be disqualified from the tournament.

**18 YEARS OF AGE** is the minimum for a player to enter tournaments and qualify for prizes. There is no limit to how many times a player can enter a tournament. Only the highest score applies.

**TAMPERING** with tournament equipment disqualifies the player or location from the tournament.

**LEADERBOARDS** update after each tournament play or every hour, whichever comes first. Other tournament games may display the same player's best score and game.

**FINAL WINNERS LISTS** are created by the system a few days after a tournament ends and are posted to each game for 14 days. Lists are also available at [www.bigbuckhunter.com](http://www.bigbuckhunter.com), [www.bigbucksafari.com](http://www.bigbucksafari.com), or [www.coinup.com](http://www.coinup.com).

**WINNERS** must personally claim their prizes. Claim instructions appear at the start of every leaderboard or winners list. To claim prizes for CoinUp™-sponsored tournaments, winners can call PlayMechanix® toll-free: (866) 646-5358 x150 or fax a completed prize form to (630) 942-1073.

**OPERATOR-SPONSORED CUSTOM CONTESTS** may have custom prize claim rules. Operators who create custom tournaments fulfill the prizes. Typically, at the start of each leaderboard or winner's list, the game presents claim information.

**PRIZE CLAIM FORMS** can be found under the Winners Circle at [www.bigbuckhunter.com](http://www.bigbuckhunter.com), [www.bigbucksafari.com](http://www.bigbucksafari.com), or in the Documents section at [www.coinup.com](http://www.coinup.com). Winners must sign a written claim form and present a copy of a driver's license or other government-issued picture ID.

**ONE PRIZE PER TOURNAMENT** is the limit for each player.

**RULES AND PROCEDURES** for CoinUp™ follow federal, state and local laws, and location rules and procedures. Where a jurisdiction prohibits tournaments or some tournament rules, these tournaments or rules are void. Invalidation of any tournament rule leaves other tournament rules in force. Without notice, CoinUp™ management can change tournament rules. Such changes replace posted rules.

**MALFUNCTIONS** void all plays. Each location decides whether to refund the paid entry fee.

**GRIEVANCE CLAIMS** are decided by the CoinUp™ administrators. CoinUp™ administrators' decisions are final. The player's entry fee is the limit for the claim amount.

**INELIGIBLE TOURNAMENT PLAYERS:** Employees of RawThrills®, PlayMechanix® and associated game manufacturers and selling agents are not eligible, as are their immediate family members.

**TOURNAMENT RULES AND WINNER LISTS** available by sending a self addressed, stamped envelope to:

*CoinUp™ Rules and Winners  
PlayMechanix®  
800 Roosevelt Road, Suite D -103  
Glen Ellyn, IL 60137*

### Verifying Online Play is Enabled

1. Enter Diagnostic mode.
2. Select Online Menu—Game Registration Menu—Current Registration Status
3. The *Online Permissions* field should indicate: *ALL ONLINE PLAY ENABLED*.
4. Select Exit repeatedly to return to Attract mode

### Verifying Active Tournaments

1. Enter Diagnostic mode.
2. Select Online Menu—Show Tournaments
3. This screen lists currently running tournaments and shows whether new tournaments have been downloaded.
4. Select Exit repeatedly to return to Attract mode

### Collection Procedure

The CoinUp™ server tracks various bookkeeping statistics including collections. To see them, log on to the CoinUp™ Operator Center page at [www.coinup.com](http://www.coinup.com) and go to the Reports section.

1. During a normal collection, enter Diagnostics mode.
2. Select COLLECTIONS.
3. Review the entire report. The system calculates GROSS COLLECTION from the last time the report screen was cleared. This figure and the actual collection should agree.
4. Select SEND COLLECTIONS MESSAGE.  
After sending the collections, coin related audits will automatically be reset. This allows the coin audits to accurately reflect earnings since the last collection. If you don't send collections, the next collection won't match the figures on the COLLECTIONS screen and you will not be able to view your collections on [www.coinup.com](http://www.coinup.com).  
*If you wish to reset the other game audits, go to Reset Menu—Reset Game Audits.*
6. Split collection with location as usual. *CoinUp™ debits your account for its portion.*

### Fee Schedule

*Pricing is subject to change without notice.*

For certain online features, CoinUp™ collects a small portion of game revenue at a fixed rate that operators cannot adjust. This portion is included in the player cost for all online play. The location portion of most game features can be adjusted through [www.coinup.com](http://www.coinup.com) under the Game Machines section, or at the game, by entering Diagnostic Mode and going to Operator Adjustments—Player Cost. Make adjustments to each game.

Service	Operator	CoinUp™	Total	Who Pays	Note
<b>Basic Play</b>					
<i>Trek</i>	\$1.00	\$0.00	\$1.00	Player, at game	Operator portion is adjustable
<i>Adventure</i>	\$2.50	\$0.00	\$2.50	Player, at game	Operator portion is adjustable
<b>Trophy Club™</b>					
<i>Trek</i>	\$1.00	\$0.50	\$1.50	Player, at game	Operator portion is adjustable
<i>Adventure</i>	\$2.50	\$0.50	\$3.00	Player, at game	Operator portion is adjustable
<b>Custom Contest</b>					
5 sites + bonus	\$1.00	\$0.50	\$1.50	Player, at game	Operator portion is adjustable
10 sites + 2 bonuses	\$2.00	\$0.50	\$2.50	Player, at game	Operator portion is adjustable
15 sites + 3 bonuses	\$3.00	\$0.50	\$3.50	Player, at game	Operator portion is adjustable
<b>Coinup™-Sponsored Contest</b>					
5 sites + bonus	\$1.50	\$1.50	\$3.00	Player, at game	Operator portion <b>not</b> adjustable.
10 sites + 2 bonuses	\$2.50	\$1.50	\$4.00	Player, at game	Operator portion <b>not</b> adjustable.
15 sites + 3 bonuses	\$3.50	\$1.50	\$5.00	Player, at game	Operator portion <b>not</b> adjustable.
Player card purchase	\$0.25	\$2.75	\$3.00	Player, at game	Operator portion <b>not</b> adjustable.
<b>Monthly Cell Service</b>					
Per unit (if applicable)	N/A	\$17.99	\$17.99	Operator	Taxes and fees from cell provider

## Accounting Guidelines

After the close of every billing cycle, the monthly CoinUp™ billing statement is available. View it through the operator account at [www.coinup.com](http://www.coinup.com).

The CoinUp™ billing statement itemizes costs of online services, including

- Tournament play
- Trophy Club™ play
- Player card purchases

For easy account reconciliation, each statement includes the last collection.

Be sure to use the Send Collections feature after every collection.

The statement shows the approximate date of the automatic debit, allowing time to deposit the appropriate funds. The automatic debit charges the bank account submitted on your debit account form.

CoinUp™ honors company checks. CoinUp™ must receive company checks three or more business days before the debit date.

***Late or delinquent deposits may exclude your game from access to online features.***

## Prize Claim Guidelines

Winning leaderboards are viewable on tournament-enabled screens for 14 days after the tournament ends, as well as at [www.bigbuckhunter.com](http://www.bigbuckhunter.com) or [www.bigbucksafari.com](http://www.bigbucksafari.com). Prize claim instructions appear on tournament leaderboards viewed from game cabinets. Prize fulfillment for CoinUp™-sponsored tournaments is handled by PlayMechanix®, Inc. Operators who create operator-sponsored, custom tournaments fulfill prizes for those tournaments.

Winners must claim prizes within 90 days of tournament end date by calling CoinUp™ at 1-866-646-5358 x150.

Winning claimants must provide the following information.

- Name
- PIN
- Social Security Number
- Mailing Address
- Phone Number
- Winning Location

CoinUp™ sends a prize claim form to each player who claims a prize. The winner must return the completed and signed form to CoinUp™ and attach a photocopy of an ID with the player's Social Security Number.

Four to six weeks after receipt of the claim form, bonafide winners receive prizes by mail. CoinUp™ reports tournament prizes to the IRS as income of the winner. At year end, winners of prizes totaling \$600 or more receive a 1099 tax form. Players are solely responsible for tracking their expenses.

Claiming and verifying scores are responsibilities of contest winners. For CoinUp™-sponsored contests, CoinUp™ is responsible for prize payments to valid winners. For operator-sponsored contests, operators and locations are responsible for prize payments to valid winners.

## Discrepancies or Duplicate Claims

When these occur, there are two discrepancy resolution policies.

In CoinUp™-sponsored tournaments, CoinUp™ administrators investigate discrepancies, validate claimants' identities, then resolve claim disputes. This dispute resolution is the claimant's only, final and irrevocable remedy.

In operator-sponsored tournaments, the operator or representatives investigate discrepancies and validate claimants' identities. The operator follows his own dispute resolution policy. The operator's decision is final and irrevocable.

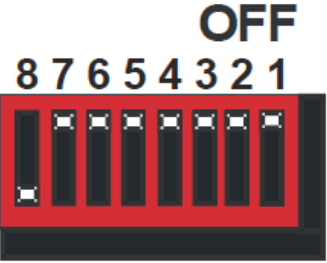
A player must be at least 18 years old to enter tournaments and claim prizes.

Tampering with tournament equipment disqualifies the player or location from the tournament.

CoinUp™ tournaments adhere to CoinUp™ rules and procedures. CoinUp™ tournaments also follow federal, state and local laws, and location rules and procedures. Where a jurisdiction prohibits tournaments or some tournament rules, these tournaments or rules are void. Invalidation of any tournament rule leaves other tournament rules in force. Without notice, CoinUp™ management can change tournament rules. Such changes replace posted rules.

# Troubleshooting

## Software Installation Troubleshooting Table

Problem	Possible Cause	Solution
Software loads only partially. Game continuously resets.	DIP switches in wrong position.   <i>Red DIP switch bank on JAMMA I/O board</i>	Enter diagnostic menu system and choose System Information Menu—DIPSwitch Settings. DIP switches 1 through 7 should be off and 8 should be on. If settings are OK, call CoinUp™ service (see pg 48 for contact info).  If settings are wrong, exit out of menu system. <ol style="list-style-type: none"> <li>1. Turn off cabinet AC power.</li> <li>2. Unplug power cord.</li> <li>3. Open back door.</li> <li>4. On the JAMMA I/O board, locate the red DIP switch bank.</li> <li>5. Using the point of a pen, set switches 1 through 7 to off.</li> <li>6. Set switch 8 to on.</li> <li>7. Close back door.</li> <li>8. Plug in power cord.</li> <li>9. Turn on AC power.</li> <li>10. Reinstall tournament software.</li> </ol>

## Card Reader Troubleshooting Table

Problem	Possible Cause	Solution
Reader only reads intermittently.	Dirty card	Clean card with a cleaning swab pre-soaked in isopropyl alcohol. Do not use any other cleaner.
	Dirty reader	Clean reader with a cleaning card or with cleaning swab pre-soaked in isopropyl alcohol. <i>Do not use any other cleaner.</i>
Card reader does not work.	Bad or disconnected USB cable between reader and PC	Remove cable and replace it again tightly. <i>Reboot the machine.</i>
	Faulty reader	Run card reader diagnostic menu. If reader fails test, replace it.
	Faulty USB port	Plug cable into another USB port. If that doesn't work, replace PC.
	Game does not recognize reader or USB port.	Call CoinUp™ service (see pg 48 for contact info)

**TO CLEAN YOUR CARD READER**, only use small amounts of isopropyl alcohol on a swab! Other chemicals, cleaners or solvents damage the reader. Treated cards and swabs are probably better than soaking a facial swab in alcohol. Only use card reader cleaning cards and swabs.

## Sign Troubleshooting Table

Problem	Possible Cause	Solution
LED sign is dim or not on	Disconnected power wiring	Check connection between sign cable and 12V power connector on PC. Check connection between LED sign and sign cable.
	Faulty power wiring	Disconnect sign at end of cable. Measure voltage at sign end of cable. Sign requires +12V. If voltage is low by 2.5V or more, replace cable.
	Faulty power supply	Check voltage at display. If it is high by 2.5V or more, call CoinUp™ service toll free at (866) 646-1975.
	Faulty display	Ensure voltage at display is OK. If display does not light, or part of it is out, replace LED array.

## Cellular Troubleshooting Table

Problem	Possible Cause	Solution
Game cannot connect to CoinUp™ server  No IP address appears under Test Connections menu	Poor connection between cell modem and PC.	Check that USB connections at cell modem and PC are tight. Turn off cabinet AC power. Wait 30 seconds and restart game. If still not connect, enter diagnostics mode and go to Connection Menu. Select Cell Modem Details. If message is <i>No Modem Found</i> or <i>Collecting Data</i> call CoinUp™ service.
	Faulty cell modem	Ensure PWR LED on cell modem glows green, which means PC is providing modem with power. If no power, swap with working modem. Check modem for obvious damage (dents, burns, smoke damage, broken connectors) If modem seems fine, call CoinUp™ service. (see pg 48 for contact info)
Cell modem connection is good and IP address appears at Test Connection screen. Under Cell Modem Details, signal is weak or nonexistent.	Poor antenna location	Turn off game and move it near window or exterior wall.
	Faulty connection	Check connections between cell modem and antenna. If cable is frayed, broken or looks dried-up, replace it. Replace antenna if it appears damaged.

## Ethernet Troubleshooting Table

Problem	Possible Cause	Solution
Game cannot connect to CoinUp™ server. No IP address appears under Test Connections menu	No broadband internet service	Contact a local ISP to setup either cable modem or DSL service.
	Wrong router configuration	Configure router for DHCP (Dynamic Host Configuration Protocol).
	Disconnected Ethernet cable	Check that Ethernet cables are tightly connected at both ends. An audible click confirms tightness. Restart game. In Diagnostic mode, selection Online Menu—Connection Menu—Test Connection. Confirm that IP address appears. The phrase eth0 must follow IP address.
	Faulty Ethernet cable	Test cable by connecting it from another PC into router or wall jack. Replace cable if faulty.
	Faulty Ethernet wall jack.	Plug Ethernet cable into a different jack.
	Broadband service is down.	Contact ISP.
	Faulty router	Plug Ethernet cable into different jacks in router. Plug Ethernet cable directly into DSL or cable modem instead of router. Replace router if faulty
	Faulty network card	Call CoinUp™ service (see pg 48 for contact info)

## Connection to CoinUp™ Troubleshooting Table

Problem	Possible Cause	Solution
Game has IP address and screen says <i>Server Ping Success</i> but Test Connection screen reports Database Ping failure or File Server Ping failure.	Firewall is blocking communication with server.	Read firewall documentation. Ensure configuration allows ICMP Echo. If router has built-in firewall, check router configuration. Enable communication on ports 7786 and 7787.
	Database or File Server is down	Wait 30 minutes and revisit Test Connection screen. If still reporting failure, call CoinUp™ service (see pg 48 for contact info)

## Wi-Fi Troubleshooting Table

Problem	Possible Cause	Solution
Wi-Fi Details status is <i>Not Connected</i> and Adapter is <i>Not Found</i> .	A supported USB Wi-Fi adapter is not connected.	Connect a supported Wi-Fi adapter. Turn cabinet AC power off for a minute and restart.
	Operating system has lost communication with the adapter.	Unplug Wi-Fi adapter from PC. Wait one minute, then plug it in. Turn off cabinet AC power. Wait one minute and restart.
Wi-Fi Details status is <i>Not Connected</i> , but a supported adapter <b>is</b> connected.	Wi-Fi network information was not saved.	Configure game to connect to Wi-Fi network at Wi-Fi Setup Menu.
Wi-Fi Details status remains <i>Locating Access Point ...</i> for more than 5 minutes.	Weak signal or interference causing delay in locating access point.	Restart cabinet AC power.
	Wireless access point or router is off or disconnected.	Ensure access point has power. Ensure it is connected to router. Restart access point. Ensure router has power and is connected to cable/DSL modem.
	Network information entered in Wi-Fi Setup does not match information stored in the wireless access point or router.	Re-enter network information. Configure game to connect to network in Wi-Fi Setup Menu. Ensure encryption type, encryption key, SSID and broadcast channel match what is stored in wireless access point or router.
Wi-Fi Details status remains <i>Obtaining IP Address...</i> for more than 5 minutes.	Weak signal or interference delaying negotiation of IP address with router.	Restart cabinet AC power.
	Wireless access point or router is off or disconnected.	Ensure access point has power. Ensure it is connected to router. Ensure router has power and is connected to cable/DSL modem.
Game has an IP address, but Test Connection menu shows that Server, Database and Fileserver pings all report failures.	Server information is outdated.	In Diagnostics Menu, select Online Menu—Online Debug Menu—View Online Debug Details—Server Details—Refresh Server Info. After refresh, new host names and IP addresses of CoinUp™ servers are displayed.



# **Forms**

The *Participating Operator Agreement* and all the forms needed to setup a CoinUp™ account are in this section. Pages are perforated, so they can be filled out, signed, removed and faxed or mailed. Make a photocopy before mailing the original signed form.

The forms included are:

- *Authorization Agreement for Automated Payments*
- *Participating Operator Agreement*
- *Operator Registration*
- *Prize Claim*
- *IRS Form W-9, Request for Taxpayer Identification Number and Certification*
- *Cell Modem Service Agreement*

Also, file the *Authority for Direct Banking Transactions* with PlayMechanix® to start activation. Once the form is received, an operator identification card will be mailed, allowing you to register games on site.

## Authorization Agreement for Automated Payments

I (we) hereby authorize PlayMechanix® to initiate debit entries to my (our) bank account below at the depository financial institution named below, hereinafter called DEPOSITORY and to debit the same such account. To correct errors, I (we) authorize PlayMechanix® to initiate credit entries to my (our) account below at DEPOSITORY and to credit the same account. I (we) acknowledge that the origination of ACH transactions to my (our) account must comply with the provisions of U.S. law. I (we) attach an unsigned and void check or deposit statement for my (our) account.

Company Name		<input type="checkbox"/> Checking Account	<input type="checkbox"/> Savings Account
Address		Bank Account Number	
City, State, Zip		ABA Bank routing number	
Company Contact		Bank Name	
Phone Number (    )	Fax number (    )	Bank Address	
Email Address		City, State, Zip	
Distributor		Bank Phone Number (    )	

**NOTICE.** To assist in verifying data, attach an unsigned, void, blank check or deposit slip from your account.

This authorization is to remain in full force and effect until PlayMechanix® has received written notification from me (us) of its termination in such time and in such manner as to afford PlayMechanix® and DEPOSITORY a reasonable opportunity to act on it.

**NOTE: ALL WRITTEN DEBIT AUTHORIZATIONS MUST PROVIDE THAT THE RECEIVER MAY REVOKE THE AUTHORIZATION ONLY BY NOTIFYING THE ORIGINATOR IN THE MANNER SPECIFIED IN THE AUTHORIZATION.**

Authorized Signature   (Signature must accompany this form.)	Title	Date
---	-------	------

*Mail or fax completed form to...*

**PlayMechanix®**

800 Roosevelt Rd.

Suite D-103

Glen Ellyn, IL 60137

- 630-942-1070

- 630-942-1073 Fax

*For processing, allow 2 to 5 business days.*

## Participating Operator Agreement

This agreement is by and between PlayMechanix®, Inc. ("PlayMechanix®") an Illinois corporation with offices at 800 Roosevelt Rd. Suite D-103, Glen Ellyn, IL 60137, and

("Operator" or "You")

I (we) enter into this agreement on this day of \_\_\_\_\_, 20

In consideration of mutual promises and other valuable consideration, the parties agree as follows.

### 1. APPLICATION

1.1 This Agreement applies to your use of PlayMechanix®' CoinUp™ products, software, services and web sites (referred to collectively as the "Services" in this document). The agreement is valid for one year from the date above. And shall automatically renew for one year on the anniversary date of the agreement unless otherwise cancelled in writing.

1.2 Unless otherwise agreed in writing with PlayMechanix®, your agreement with PlayMechanix® will always include, at a minimum, the terms and conditions set out in this document.

### 2. ACCEPTING THE TERMS

In order to use the Services, you must first agree to the Terms. You may not use the Services if you do not accept the Terms. You can accept the Terms by signing the bottom of this agreement.

### 3. PROVISION OF THE SERVICES BY PLAYMECHANIX®

3.1 PlayMechanix® agrees to:

- Provide access to CoinUp™ servers by Operator's games that contain CoinUp™-enabled software.
- Provide Operator access to CoinUp™ servers via [www.coinup.com](http://www.coinup.com).
- Run CoinUp™ sponsored tournaments from time to time throughout the year and include Operator's games in such tournaments to the extent that federal, state and local laws provide.
- Take responsibility for fulfillment and distribution of CoinUp™ sponsored tournament prizes.
- Manage and support CoinUp™ players' online Trophy Club™ and allow players access to their statistics via [www.bigbuckhunter.com](http://www.bigbuckhunter.com) and [www.coinup.com](http://www.coinup.com).
- Provide billing statements to Operator. PlayMechanix® will make an electronic copy of the Operator's monthly bill available online at [www.coinup.com](http://www.coinup.com) at least four business days before automatically debiting fees due according to billing statement. (These fees accrue to PlayMechanix®)
- Provide periodic statements for CoinUp™ entry fees, and IRS 1099 reporting for CoinUp™ sponsored prize awards..
- Warrant CoinUp™ online kit parts for 90-day replacement against defects in materials and workmanship.
- Promote CoinUp™, CoinUp™-sponsored tournaments and gameplay on PlayMechanix® products.
- PLAYMECHANIX® WILL NOT PROVIDE PRIZES FOR TOURNAMENTS THAT ARE CUSTOM CREATED BY THE OPERATOR. THOSE PRIZE AWARDS WILL BE THE SOLE RESPONSIBILITY OF THE OPERATOR.

3.2 PlayMechanix® is constantly innovating in order to provide the best possible experience for its users. You acknowledge and agree that the form and nature of the Services which PlayMechanix® provides may change from time to time without prior notice to you.

3.3 As part of this continuing innovation, you acknowledge and agree that PlayMechanix® may stop (permanently or temporarily) providing the Services (or any features within the Services) to you or to users generally at PlayMechanix®' sole discretion, without prior notice to you.

#### 4. USE OF SERVICES BY OPERATOR

##### 4.1 Operator agrees to...

- Submit a completed Authorization Agreement for Automated Payments form.
- Properly register Operator's games that utilize the CoinUp™ system and keep each game's location information accurate.
- Keep Operator account profile information on the CoinUp™ servers up to date and accurate via the [www.coinup.com](http://www.coinup.com) website.
- Ensure that CoinUp™-sponsored tournament rules and regulations are followed on location and report noncompliance or cheating immediately to PlayMechanix®.
- Report significant malfunctions of equipment and software to PlayMechanix®.
- The schedule of CoinUp™ fees that will be charged for usage of the CoinUp™ system may change from time to time. The current CoinUp™ Fee Schedule is available by request from [www.coinup.com](http://www.coinup.com). Operator further agrees that the CoinUp™ Fee Schedule that is contained in the documents section of [www.coinup.com](http://www.coinup.com) at the time of signing this agreement is the version that shall apply.
- Make funds available to pay bills due PlayMechanix® in a timely and professional fashion. A \$40.00 late fee will apply for insufficient funds available for transfer.
- To use the Services only for purposes that are permitted by (a) the Terms and (b) any applicable law, regulation or generally accepted practices or guidelines in the relevant jurisdictions.
- Be responsible for fulfillment of prizes to participants in contests custom created by Operator using the CoinUp™ system and do so in a prompt and accurate manner.
- Allow CoinUp™ to place corporate sponsorships and advertisements on CoinUp™ enabled games.
- Allow PlayMechanix® to place corporate sponsorships and advertisements on CoinUp™ enabled games. This provision excludes locations where previous agreements with other parties prevent Operator from allowing advertising.

4.2 You agree not to access (or attempt to access) any of the Services by any means other than through the interface(s) provided by PlayMechanix®.

4.3 You agree that you will not engage in any activity that interferes with or disrupts the Services (or the servers and networks which are connected to the Services).

4.4 You agree that you will not reproduce, duplicate, copy, sell, trade or resell the Services for any purpose.

4.5 Operator agrees that any violation of the terms of this agreement shall be grounds for immediate termination by PlayMechanix® of this agreement.

#### 5. TOURNAMENT PROCEEDS & TAXES & LEGALITY

The Operator agrees to pay taxes, fees, licenses and assessments ("Fees") on CoinUp™ monies that may become due as a result of using Services. Operator shall insure that the operation of the CoinUp™ system is conforming with all local, and state laws; and shall not operate the CoinUp™ system in any jurisdiction where it is illegal to do so.

#### 6. PASSWORDS AND ACCOUNT SECURITY

6.1 You agree and understand that you are responsible for maintaining the confidentiality of passwords associated with any account you use to access the Services.

6.2 Accordingly, you agree that you are responsible to PlayMechanix® for all activities that occur under your account.

6.3 If you become aware of any unauthorized use of your password or of your account, you agree to notify PlayMechanix® immediately.

## 7. CONTENT IN THE SERVICES

- 7.1 You understand that all information (such as data files, written text, music, audio files or other sounds, photographs, videos or other images) which you may have access to as part of, or through your use of, the Services are the sole responsibility of the person from which such content originated. All such information is referred to below as the "Content."
- 7.2 You should be aware that Content presented to you as part of the Services, including but not limited to advertisements in the Services and sponsored Content within the Services may be protected by intellectual property rights which are owned by the sponsors or advertisers who provide that Content to PlayMechanix® (or by other persons or companies on their behalf). You may not modify, rent, lease, loan, sell, distribute or create derivative works based on this Content (either in whole or in part) unless you have been specifically told that you may do so by PlayMechanix® or by the owners of that Content, in a separate written agreement.
- 7.3 PlayMechanix® reserves the right (but shall have no obligation) to pre-screen, review, flag, filter, modify, refuse or remove any or all Content from any Service.
- 7.4 You agree that you are solely responsible for (and that PlayMechanix® has no responsibility to you or to any third party for) any Content that you create, transmit or display while using the Services and for the consequences of your actions (including any loss or damage which PlayMechanix® may suffer) by doing so.
- 7.5 You agree that you will not willfully or knowingly upload graphic content to the CoinUp™ servers that violates the copyright or trademark of another individual or corporation.

## 8. PROPRIETARY RIGHTS

- 8.1 You acknowledge and agree that PlayMechanix® (or PlayMechanix® licensors) own all legal right, title and interest in and to the Services, including any intellectual property rights which subsist in the Services (whether those rights happen to be registered or not, and wherever in the world those rights may exist). You further acknowledge that the Services may contain information which is designated confidential by PlayMechanix® and that you shall not disclose such information without PlayMechanix® prior written consent.
- 8.2 Unless you have agreed otherwise in writing with PlayMechanix®, nothing in the Terms gives you a right to use any of PlayMechanix® trade names, trademarks, service marks, logos, domain names, or other distinctive brand features.
- 8.3 Other than the limited license set forth in Section 10, PlayMechanix® acknowledges and agrees that it obtains no right, title or interest from you (or your licensors) under these Terms in or to any Content that you submit, post, transmit or display on, or through, the Services, including any intellectual property rights which subsist in that Content (whether those rights happen to be registered or not, and wherever in the world those rights may exist). Unless you have agreed otherwise in writing with PlayMechanix®, you agree that you are responsible for protecting and enforcing those rights and that PlayMechanix® has no obligation to do so on your behalf. PlayMechanix® further acknowledges that servers may contain information which is designated confidential by you and that PlayMechanix® shall not disclose such information without your prior written consent.
- 8.4 You agree that you shall not remove, obscure, or alter any proprietary rights notices (including copyright and trademark notices) that may be affixed to or contained within the Services.
- 8.5 Unless you have been expressly authorized to do so in writing by PlayMechanix®, you agree that in using the Services, you will not use any trademark, service mark, trade name, logo of any company or organization in a way that is likely or intended to cause confusion about the owner or authorized user of such marks, names or logos.

## 9. LICENSE FROM PLAYMECHANIX®

- 9.1 PlayMechanix® gives you a, worldwide, royalty-free, non-assignable and non-exclusive license to use the software provided to you by PlayMechanix® as part of the Services as provided to you by PlayMechanix® (referred to as the “Software” below). This license is for the sole purpose of enabling you to use and enjoy the benefit of the Services as provided by PlayMechanix®, in the manner permitted by the Terms.
- 9.2 You may not (and you may not permit anyone else to) copy, modify, create a derivative work of, reverse engineer, decompile or otherwise attempt to extract the source code of the Software or any part thereof, unless this is expressly permitted or required by law, or unless you have been specifically told that you may do so by PlayMechanix®, in writing.
- 9.3 Unless PlayMechanix® has given you specific written permission to do so, you may not assign (or grant a sub-licence of) your rights to use the Software, grant a security interest in or over your rights to use the Software, or otherwise transfer any part of your rights to use the Software.

## 10. CONTENT LICENSE FROM YOU

- 10.1 You retain copyright and any other rights you already hold in Content which you submit, post or display on or through, the Services. By submitting, posting or displaying the content you give PlayMechanix® a perpetual, irrevocable, worldwide, royalty-free, and non-exclusive license to reproduce, adapt, modify, translate, publish, publicly perform, publicly display and distribute any Content which you submit, post or display on or through, the Services. This license is for the sole purpose of enabling PlayMechanix® to display, distribute and promote the Services and may be revoked for certain Services as defined in the Additional Terms of those Services.
- 10.2 You agree that this license includes a right for PlayMechanix® to make such Content available to other companies, organizations or individuals with whom PlayMechanix® has relationships for the provision of syndicated services, and to use such Content in connection with the provision of those services.
- 10.3 You understand that PlayMechanix®, in performing the required technical steps to provide the Services to our users, may (a) transmit or distribute your Content over various public networks and in various media; and (b) make such changes to your Content as are necessary to conform and adapt that Content to the technical requirements of connecting networks, devices, services or media. You agree that this license shall permit PlayMechanix® to take these actions.
- 10.4 You confirm and warrant to PlayMechanix® that you have all the rights, power and authority necessary to grant the above license.

## 11. SOFTWARE UPDATES

- 11.1 The Software which you use may automatically download and install updates from time to time from PlayMechanix®. These updates are designed to improve, enhance and further develop the Services and may take the form of bug fixes, enhanced functions, new software modules and completely new versions. You agree to receive such updates (and permit PlayMechanix® to deliver these to you) as part of your use of the Services.

## 12. EXCLUSION OF WARRANTIES

- 12.1 NOTHING IN THESE TERMS, INCLUDING SECTIONS 12 AND 13, SHALL EXCLUDE OR LIMIT PLAYMECHANIX® WARRANTY OR LIABILITY FOR LOSSES WHICH MAY NOT BE LAWFULLY EXCLUDED OR LIMITED BY APPLICABLE LAW. SOME JURISDICTIONS DO NOT ALLOW THE EXCLUSION OF CERTAIN WARRANTIES OR CONDITIONS OR THE LIMITATION OR EXCLUSION OF LIABILITY FOR LOSS OR DAMAGE CAUSED BY NEGLIGENCE, BREACH OF CONTRACT OR BREACH OF IMPLIED TERMS, OR INCIDENTAL OR CONSEQUENTIAL DAMAGES. ACCORDINGLY, ONLY THE LIMITATIONS WHICH ARE LAWFUL IN YOUR JURISDICTION WILL APPLY TO YOU AND OUR LIABILITY WILL BE LIMITED TO THE MAXIMUM EXTENT PERMITTED BY LAW.
- 12.2 YOU EXPRESSLY UNDERSTAND AND AGREE THAT YOUR USE OF THE SERVICES IS AT YOUR SOLE RISK AND THAT THE SERVICES ARE PROVIDED "AS IS" AND "AS AVAILABLE."
- 12.3 IN PARTICULAR, PLAYMECHANIX®, ITS PARENT, ITS SUBSIDIARIES AND AFFILIATES, AND ITS

LICENSORS DO NOT REPRESENT OR WARRANT TO YOU THAT:

- (A) YOUR USE OF THE SERVICES WILL MEET YOUR REQUIREMENTS;
- (B) YOUR USE OF THE SERVICES WILL BE UNINTERRUPTED, TIMELY, SECURE OR FREE FROM ERROR;
- (C) ANY INFORMATION OBTAINED BY YOU AS A RESULT OF YOUR USE OF THE SERVICES WILL BE ACCURATE OR RELIABLE; AND
- (D) THAT DEFECTS IN THE OPERATION OR FUNCTION OF ANY SOFTWARE PROVIDED TO YOU AS PART OF THE SERVICES WILL BE CORRECTED.

12.4 ANY MATERIAL DOWNLOADED OR OTHERWISE OBTAINED THROUGH THE USE OF THE SERVICES IS DONE AT YOUR OWN DISCRETION AND RISK AND THAT YOU WILL BE SOLELY RESPONSIBLE FOR ANY DAMAGE TO YOUR COMPUTER SYSTEM OR OTHER DEVICE OR LOSS OF DATA THAT RESULTS FROM THE DOWNLOAD OF ANY SUCH MATERIAL.

12.5 NO ADVICE OR INFORMATION, WHETHER ORAL OR WRITTEN, OBTAINED BY YOU FROM PLAYMECHANIX® OR THROUGH OR FROM THE SERVICES SHALL CREATE ANY WARRANTY NOT EXPRESSLY STATED IN THE TERMS.

12.6 PLAYMECHANIX® FURTHER EXPRESSLY DISCLAIMS ALL WARRANTIES AND CONDITIONS OF ANY KIND, WHETHER EXPRESS OR IMPLIED, INCLUDING, BUT NOT LIMITED TO THE IMPLIED WARRANTIES AND CONDITIONS OF MERCHANTABILITY, FITNESS FOR A PARTICULAR PURPOSE AND NON-INFRINGEMENT.

### 13. LIMITATION OF LIABILITY

13.1 SUBJECT TO OVERALL PROVISION IN PARAGRAPH 12.1 ABOVE, YOU EXPRESSLY UNDERSTAND AND AGREE THAT PLAYMECHANIX®, ITS PARENT, ITS SUBSIDIARIES AND AFFILIATES, AND ITS LICENSORS SHALL NOT BE LIABLE TO YOU FOR:

- (A) ANY DIRECT, INDIRECT, INCIDENTAL, SPECIAL CONSEQUENTIAL OR EXEMPLARY DAMAGES THAT MAY BE INCURRED BY YOU, HOWEVER CAUSED AND UNDER ANY THEORY OF LIABILITY. THIS SHALL INCLUDE, BUT NOT BE LIMITED TO, ANY LOSS OF PROFIT (WHETHER INCURRED DIRECTLY OR INDIRECTLY), ANY LOSS OF GOODWILL OR BUSINESS REPUTATION, ANY LOSS OF DATA SUFFERED, COST OF PROCUREMENT OF SUBSTITUTE GOODS OR SERVICES, OR OTHER INTANGIBLE LOSS;
- (B) ANY LOSS OR DAMAGE WHICH MAY BE INCURRED BY YOU, INCLUDING BUT NOT LIMITED TO LOSS OR DAMAGE AS A RESULT OF:
  - (I) ANY RELIANCE PLACED BY YOU ON THE COMPLETENESS, ACCURACY OR EXISTENCE OF ANY ADVERTISING, OR AS A RESULT OF ANY RELATIONSHIP OR TRANSACTION BETWEEN YOU AND ANY ADVERTISER OR SPONSOR WHOSE ADVERTISING APPEARS ON THE SERVICES;
  - (II) ANY CHANGES WHICH PLAYMECHANIX® MAY MAKE TO THE SERVICES, OR FOR ANY PERMANENT OR TEMPORARY CESSATION IN THE PROVISION OF THE SERVICES (OR ANY FEATURES WITHIN THE SERVICES);
  - (III) THE DELETION OF, CORRUPTION OF, OR FAILURE TO STORE, ANY CONTENT AND OTHER COMMUNICATIONS DATA MAINTAINED OR TRANSMITTED BY OR THROUGH YOUR USE OF THE SERVICES;
  - (III) YOUR FAILURE TO PROVIDE PLAYMECHANIX® WITH ACCURATE ACCOUNT INFORMATION;
  - (IV) YOUR FAILURE TO KEEP YOUR PASSWORD OR ACCOUNT DETAILS SECURE AND CONFIDENTIAL;

13.2 THE LIMITATIONS ON PLAYMECHANIX® LIABILITY TO YOU IN PARAGRAPH 12.1 ABOVE SHALL APPLY WHETHER OR NOT PLAYMECHANIX® HAS BEEN ADVISED OF OR SHOULD HAVE BEEN AWARE OF THE POSSIBILITY OF ANY SUCH LOSSES ARISING.

**14. COPYRIGHT AND TRADEMARK POLICY**

14.1 It is PlayMechanix®' policy to respond to notices of alleged copyright infringement that comply with applicable international intellectual property law (including, in the United States, the Digital Millennium Copyright Act) and to terminate the accounts of infringers.

**15. MISCELLANEOUS**

15.1 This Agreement shall be governed and interpreted in accordance with the substantive laws of the State of Illinois. The parties agree that any litigation for injunctive relief shall be resolved in the state or federal courts within Cook County, Illinois.

15.2 Should any provision of this Agreement be held void, invalid or inoperative, by a Court of competent jurisdiction, the remaining provisions of this Agreement shall not be affected and shall continue in full force and effect.

15.3 This Agreement states the entire Agreement between parties with respect to the subject hereof and supersedes all prior oral and written negotiations, understandings and agreements between the parties hereto concerning the subject matter hereof. No amendment or modification of this Agreement shall be made except by an instrument in writing signed by both parties.

15.4 No waiver of any of the provisions of this Agreement or any breach thereof or failure of any condition therein shall be deemed, or shall constitute, a waiver of any other provision, whether or not similar, nor shall any waiver constitute a continuing waiver. No waiver shall be implied from any conduct or course of conduct of any party. No waiver shall be binding unless executed in writing by the party making the waiver.

15.5 Subject to the restrictions on transfer herein, this Agreement shall inure to the benefit of and be binding upon PlayMechanix® and Operator and their respective heirs, executors, trustees, beneficiaries, legal representatives, successors and assigns.

15.6 Except for PlayMechanix® parent corporation, no other person, corporation, partnership, or other entity, shareholder, director, officer, employee, independent contractor, vendor, customer or any other third party shall be deemed to be a third party beneficiary of any provisions herein.

By

OPERATOR LEGAL COMPANY NAME

OPERATOR SIGNATURE

PlayMechanix® Inc.

PlayMechanix® Authorized  
Signature





## Operator Registration Form

- *Before you register games, you must register an operator account!*

Operator Name

Company Name

Operator Address

City, State, Zip

Country

Operator Phone

Operator Fax

Operator Email

Contact Preference       Email                       Phone

Debit Account On File:       Yes                       *No (If No, include Authorization Agreement for Automated Payments.)*

*Mail or fax completed form to...*

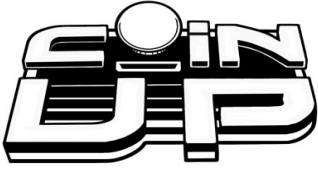
**PlayMechanix®**

800 Roosevelt Road, Suite D-103, Glen Ellyn, IL 60137

- 630-942-1070
- Fax 630-942-1073

*For processing, allow 2 to 5 business days.*

- After PlayMechanix® receives your registration, we'll mail operator cards and login information for your accounts.
- To register games online, you can use your operator cards to log in to games. If you don't have your operator cards, you can manually log in to games. Manual login requires your operator number and PIN.
- To log in to your CoinUp™ Account at [www.coinup.com](http://www.coinup.com), use your email address and password.
- After you receive your login information, you can change it through your Web account. To change your account information, use the My Profile tab.



**Submit ALL of the following documents when filing a CoinUp™ Online Tournament Prize Claim\*:**

- 1.) A **completed and signed** Prize Claim form.
- 2.) A **clear** photocopy of a legal Photo ID (i.e. Driver's License, State ID Card).

**U.S. Players also need to submit the following:**

- 3.) A **clear** photocopy of your Social Security Card **OR** a legal document containing your Social Security number.
- 4.) A **Completed and signed** W-9 Tax Form.

*Please submit these documents via one of the following:*

**Fax:**

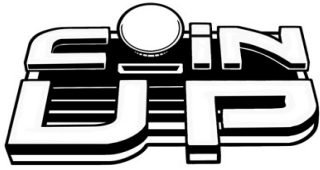
Attn: CoinUp™ Tournament Support  
(630) 942-1073

**Mail:**

PlayMechanix®  
Attn: CoinUp™ Tournament Support  
800 Roosevelt Rd  
Suite D-103  
Glen Ellyn, IL 60137

Please contact [coinup@playmechanix.com](mailto:coinup@playmechanix.com) if you have any questions.

\*If you fail to submit any of the required documents, your prize claim submission will be delayed and will not be completed. All prizes must be claimed within 90 days after the end of a tournament. If all of the above documentation is not submitted in time, unclaimed prizes will be forfeited. All documents must be complete and legible. These documents only need to be submitted once. After these documents are received and processed, all future prizes can easily be claimed online at [www.bigbuckhunter.com](http://www.bigbuckhunter.com) or [www.bigbucksafari.com](http://www.bigbucksafari.com) by logging into your player account.



# CoinUp™ Big Buck Hunter Pro® Online Prize Winner Claim Form, Information Verification and Release Acknowledgment

By completing and signing this form, I declare that I am a winner in a CoinUp™ Online Tournament and I represent and warrant the following:

1. I am at least 18 years of age and of sound mind to complete this form.
2. I hereby release all information and grant rights as stated below.
3. To the best of my knowledge, all information I have provided is accurate and true.
4. I achieved a winning score solely through my personal effort and skill, without the assistance of another party, or by cheating in any manner.
5. I have not violated any rules provided by CoinUp™.

I also agree as follows:

1. CoinUp™ may withhold award of any prize pending verification of the winner, and I will comply with the reasonable verification requests of CoinUp™, which may include an exhibition of my playing skill witnessed by a CoinUp™ representative.
2. In the event CoinUp™ determines that I am not the prize winner whether due to my disqualification or due to award of the prize by mistake, or otherwise, I will return any prize I receive from CoinUp™ upon request .
3. No prize will be awarded to me without completion and submission of this claim form along with clear photocopies of my valid drivers license / ID card, social security card and a completed W9 tax form.
4. Prizes that are not claimed within 90 days after the end of the tournament will be forfeited.
5. I accept responsibility for payment of any and all taxes on the prize award, which will be reported to the federal, state / provincial, and / or local taxing authorities.
6. I grant CoinUp™ and all associated authorized parties the unconditional right to use my name and likeness in any way related to publicity of the CoinUp™ network, its affiliated games and / or Online Tournaments. I unconditionally release and agree to hold harmless CoinUp™, PlayMechanix®, Raw Thrills™ and all associated authorized parties (including, but not limited to, their agents, assignees, licensees, representatives and successors) from any liability in conjunction with such use of my name and / or likeness or my engagement in the Online Tournament in any manner.
7. I hereby grant CoinUp™ and all associated authorized parties the unconditional right to use any and all photographs or other materials bearing my name and / or likeness.
8. I have read this document in its entirety and fully understand its contents.

Printed Name: _____		Signature: _____	
Date of Birth: _____		Social Security Number: _____	
Street Address: _____			
City: _____	State / Province: _____	Zip Code: _____	
Phone Number: _____		Email address: _____	
Tournament Name: _____		Final Ranking: _____	Prize Amount (US #): _____
Tournament Location (name): _____		City: _____	State / Province: _____

*All prizes will be paid in US Dollars. Please allow up to 6 weeks for delivery.*

**Mail Forms to:** PlayMechanix®, Attn: CoinUp™ Tournament Support, 800 Roosevelt Rd, Suite D-103, Glen Ellyn, IL 60137

**Fax Forms to:** PlayMechanix®, Attn: CoinUp™ Tournament Support, (630) 942-1073

## Request for Taxpayer Identification Number and Certification

**Give form to the  
requester. Do not  
send to the IRS.**

Print or type  
See Specific Instructions on page 2.

Name (as shown on your income tax return)	
Business name, if different from above	
Check appropriate box: <input type="checkbox"/> Individual/ Sole proprietor <input type="checkbox"/> Corporation <input type="checkbox"/> Partnership <input type="checkbox"/> Other ▶ .....	
<input type="checkbox"/> Exempt from backup withholding	
Address (number, street, and apt. or suite no.)	Requester's name and address (optional)
City, state, and ZIP code	
List account number(s) here (optional)	

### Part I Taxpayer Identification Number (TIN)

Enter your TIN in the appropriate box. The TIN provided must match the name given on Line 1 to avoid backup withholding. For individuals, this is your social security number (SSN). However, for a resident alien, sole proprietor, or disregarded entity, see the Part I instructions on page 3. For other entities, it is your employer identification number (EIN). If you do not have a number, see *How to get a TIN* on page 3.

**Note.** If the account is in more than one name, see the chart on page 4 for guidelines on whose number to enter.

Social security number								
or								
Employer identification number								

### Part II Certification

Under penalties of perjury, I certify that:

1. The number shown on this form is my correct taxpayer identification number (or I am waiting for a number to be issued to me), and
2. I am not subject to backup withholding because: (a) I am exempt from backup withholding, or (b) I have not been notified by the Internal Revenue Service (IRS) that I am subject to backup withholding as a result of a failure to report all interest or dividends, or (c) the IRS has notified me that I am no longer subject to backup withholding, and
3. I am a U.S. person (including a U.S. resident alien).

**Certification instructions.** You must cross out item 2 above if you have been notified by the IRS that you are currently subject to backup withholding because you have failed to report all interest and dividends on your tax return. For real estate transactions, item 2 does not apply. For mortgage interest paid, acquisition or abandonment of secured property, cancellation of debt, contributions to an individual retirement arrangement (IRA), and generally, payments other than interest and dividends, you are not required to sign the Certification, but you must provide your correct TIN. (See the instructions on page 4.)

**Sign Here**

Signature of U.S. person ▶

Date ▶

### Purpose of Form

A person who is required to file an information return with the IRS, must obtain your correct taxpayer identification number (TIN) to report, for example, income paid to you, real estate transactions, mortgage interest you paid, acquisition or abandonment of secured property, cancellation of debt, or contributions you made to an IRA.

**U.S. person.** Use Form W-9 only if you are a U.S. person (including a resident alien), to provide your correct TIN to the person requesting it (the requester) and, when applicable, to:

1. Certify that the TIN you are giving is correct (or you are waiting for a number to be issued),
2. Certify that you are not subject to backup withholding, or
3. Claim exemption from backup withholding if you are a U.S. exempt payee.

In 3 above, if applicable, you are also certifying that as a U.S. person, your allocable share of any partnership income from a U.S. trade or business is not subject to the withholding tax on foreign partners' share of effectively connected income.

**Note.** If a requester gives you a form other than Form W-9 to request your TIN, you must use the requester's form if it is substantially similar to this Form W-9.

For federal tax purposes, you are considered a person if you are:

- An individual who is a citizen or resident of the United States,
- A partnership, corporation, company, or association created or organized in the United States or under the laws of the United States, or
- Any estate (other than a foreign estate) or trust. See Regulations sections 301.7701-6(a) and 7(a) for additional information.

**Special rules for partnerships.** Partnerships that conduct a trade or business in the United States are generally required to pay a withholding tax on any foreign partners' share of income from such business. Further, in certain cases where a Form W-9 has not been received, a partnership is required to presume that a partner is a foreign person, and pay the withholding tax. Therefore, if you are a U.S. person that is a partner in a partnership conducting a trade or business in the United States, provide Form W-9 to the partnership to establish your U.S. status and avoid withholding on your share of partnership income.

The person who gives Form W-9 to the partnership for purposes of establishing its U.S. status and avoiding withholding on its allocable share of net income from the partnership conducting a trade or business in the United States is in the following cases:

- The U.S. owner of a disregarded entity and not the entity,

Rev. C<sup>1</sup>

## **CoinUp™ Cellular Terms of Service Agreement**

This agreement is made between PlayMechanix®, Inc. (“PM”, “we”, “us”, or “ours”) and the Operator (“Operator”, “you”, or “your”) and covers the usage and fees associated with a cellular modem device (“Equipment”) that you order from us connected to one of your games allowing it to communicate with the CoinUp™ online network (“Service”). This agreement must be signed and returned to us before we will activate a new line of service. PLEASE READ THIS AGREEMENT CAREFULLY BEFORE ORDERING CELLULAR SERVICE FOR YOUR COINUP™ CONNECTED GAME AND SIGNING THIS AGREEMENT.

### **Provision of Services**

Upon ordering the cellular modem, PlayMechanix®, Inc. will in turn order a line of cellular service (“Service”) for the cellular modem. PlayMechanix®, Inc. provides cellular service from one or more cellular providers of service throughout the United States (“Cellular Provider”). We do this to gain volume pricing for you and thereby lower the price of the Service. All costs charged to PlayMechanix®, Inc. for your line of cellular service are passed through directly to you. Ordering the Service from us is not the only option for you. You may obtain cellular service independently to connect your game. In this case, you will be responsible for all service fees and commitments. Please contact PlayMechanix®, Inc. before ordering your own cellular modem to ensure that you purchase a modem device that will be compatible with the game.

### **Service Commitment and Early Termination Fee**

1. By ordering this Service the Operator agrees to the following:
2. To pay the monthly fee associated with each line of service which will be billed to your CoinUp™ account. To keep the Service for at least a period of one year from the date of ordering (“Service Commitment”). After the initial one year term you may terminate the service at anytime with 30 days notice. If you wish to terminate the Service prior to the initial one year term, you agree to pay us an Early Termination Fee of \$175. The Early Termination Fee is not a penalty but rather the exact fee we will be charged by the cellular provider. AFTER YOUR SERVICE COMMITMENT THIS AGREEMENT SHALL RENEW ON A MONTH-TO-MONTH BASIS UNTIL EITHER PARTY GIVES NOTICE OF TERMINATION TO THE OTHER.

### **30-Day Cancellation Period**

You may terminate this agreement within thirty (30) days after activating without paying The Early Termination Fee. You will pay for service fees and charges incurred through the termination date. Also you may have to return the cellular modem purchased with this agreement. If you terminate after the 30<sup>th</sup> day but before the expiration of the Service Commitment, you will pay PM the Early Termination Fee associated with the line of service terminated. Either party may termination this agreement at any time after your Service Commitment ends with thirty (30) days notice to the other party. We may terminate this agreement at any time without notice if Cellular Provider ceases to provide service in your area. We may interrupt or terminate your service without notice for any conduct that we believe violates this agreement, or if you fail to make available funds to pay for service when due, or if we have reasonable cause to believe that your Equipment is being used for an unlawful purpose or in a way that may adversely affect the Cellular Provider’s service.

## **Charges and Disputes**

You are responsible for paying all charges for or resulting from services provided under this agreement. Your monthly service charges will be billed through your CoinUp™ account. PlayMechanix®, Inc. passes through charges directly from the Cellular Provider. If you believe that there is an error in the amount charged to your account for cellular service you may contact PlayMechanix®, Inc. to provide proof of charges from the Cellular Provider for your service. You agree that PlayMechanix®, Inc. will handle all negotiation of rate fees and billing with the Cellular Provider. PlayMechanix®, Inc. agrees to use its best efforts to resolve any and all billing disputes with the Cellular Provider. PlayMechanix®, Inc. will in its sole discretion determine if a billing error has occurred.

## **Billing and Payment**

Billing takes place through your CoinUp™ operator account. All methods of payment and late fees described in your CoinUp™ Operator Agreement shall apply.

## **Changes to Terms and Rates**

The Cellular Provider may from time to time change the rates charged for the Service. Generally, if the Cellular Provider raises the rate for Service they will allow us to discontinue the Service without fee or penalty. If PlayMechanix®, Inc. receives notice of a rate increase from the Cellular Provider associated with your Service we agree to notify you and allow you the same option given to us. If the Cellular Provider lower the rate for Service, the new rate will automatically take effect for you on the same date that it takes effect for us.

## **Data Connection Limitations**

PlayMechanix®, Inc. limits the capabilities of the Equipment so that it is only allowed to make data connections to CoinUp™ servers. You agree not to use the Cellular Service provided by us for any other purpose than connecting your Game to the CoinUp™ network. If PlayMechanix®, Inc. finds that you are using the Cellular Service for any other such purpose including but not limited to, web browsing, voice calls, and text messaging then we may immediately terminate the Cellular Service in which case you will pay all fees charged to this line of Service including the Early Termination Fee if we terminate this Service before the expiration of the Service Commitment.

## **Service Limitations and Limitation of Liability**

Service may be interrupted, delayed, or otherwise limited for a variety of reasons, including environmental conditions, unavailability of radio frequency channels, system capacity, priority access by National Security and Emergency Preparedness personnel in the event of disaster or emergency, coordination with other systems, equipment modifications and repairs, and problems with the facilities of interconnecting carriers. WE DO NOT GUARANTEE YOU UNINTERRUPTED SERVICE OR COVERAGE. PLAYMECHANIX®, INC. MAKES NO WARRANTY, EXPRESS OR IMPLIED, OF MERCHANTABILITY OR FITNESS FOR A PARTICULAR PURPOSE, SUITABILITY, OR PERFORMANCE REGARDING ANY SERVICES OR GOODS, AND IN NO EVENT SHALL PM BE LIABLE, WHETHER OR NOT DUE TO ITS OWN NEGLIGENCE, for any: (a) act or omission of a third party; (b) mistakes, omissions, interruptions, errors, failures to transmit, delays, or defects in the service provided by or through us; or (c) damage or injury caused by suspension or termination of service by PM. To the full extent allowed by law, you hereby release, indemnify and hold PM and its officers, directors, employees and agents harmless from and against any and all claims of any person or entity for damages of any nature arising in any way from or relating to, directly or

indirectly, service provided by PM or any person's use thereof, INCLUDING CLAIMS ARISING IN WHOLE OR IN PART FROM THE ALLEGED NEGLIGENCE OF PM, or any violation by you of this Agreement. This obligation shall survive termination of your service with PM. PM is not liable to you for changes in operation, equipment, or technology that cause your Equipment or software to be rendered obsolete or require modification. SOME STATES DO NOT ALLOW DISCLAIMERS OF IMPLIED WARRANTIES OR LIMITS ON REMEDIES FOR BREACH. THEREFORE, THE ABOVE LIMITATIONS OR EXCLUSIONS MAY NOT APPLY TO YOU. THIS AGREEMENT GIVES YOU SPECIFIC LEGAL RIGHTS, AND YOU MAY HAVE OTHER RIGHTS WHICH VARY FROM STATE TO STATE.

**Miscellaneous**

This agreement, the signature sheet, terms of service for products and services not otherwise described herein that are posted on applicable PM web sites, and any documents expressly referred to herein or therein, make up the complete agreement between you and PM. If any provision of the agreement is found to be unenforceable by a court or agency of competent jurisdiction, the remaining provisions will remain in full force and effect. PM may assign this agreement, but you may not assign this agreement without our prior written consent. The law of the state of your billing address shall govern this agreement except to the extent that such law is preempted by or inconsistent with applicable federal law.

**Signatures**

PlayMechanix®, Inc.

Operator Legal Name:

\_\_\_\_\_  
By:

\_\_\_\_\_  
By:

\_\_\_\_\_  
Name/Title:

\_\_\_\_\_  
Name/Title:

\_\_\_\_\_  
Date:

\_\_\_\_\_  
Date:

\_\_\_\_\_

\_\_\_\_\_

# **Service and Sales**

## **Authorized Distributor**

For an authorized distributor near you, check the Raw Thrills Web site at [www.rawthrills.com](http://www.rawthrills.com)

## **CoinUp™ Prize Claims or Service**

PlayMechanix®

800 Roosevelt Road, Suite D-103  
Glen Ellyn, IL 60137  
(866) 646-1975 fax (630) 942-1073  
[www.playmechanix.com](http://www.playmechanix.com)

## **Betson Enterprises Headquarters**

303 Paterson Plank Rd.  
Carlstadt, NJ 07072  
(800) 524-2343 or (201) 438-1300  
fax (201) 438-4837

## **Betson New England**

560 Turnpike St.  
Canton, MA 02021  
(781) 821-8533 or (800) 274-6326  
fax (781) 821-9082

## **Betson Philadelphia Distributing**

310 Hansen Access Rd.  
King of Prussia, PA. 19406  
(610) 265-1155 fax (610) 265-0909

## **Betson Pittsburgh Distributing**

2707 West Carson St.  
Pittsburgh, PA 15204  
(412) 331-8703 fax (412) 331-0712

## **Betson West-Buena Park**

5660 Knott Ave.  
Buena Park, CA 90621  
(714) 228-7500 fax (714) 228-7515

## **Betson West**

3470 Depot Road  
Hayward, CA 94545  
(510) 293-9127 or (800) 526-7906  
fax( 510) 785-5317

## **Sales**

### **Betson Enterprises Headquarters**

(800) 524-2343 Fax (201) 438-4837  
[www.betson.com](http://www.betson.com) (or contact local Betson office.\*)

### **Technical Information**

Betson Enterprises, Headquarters  
(800) 524-2343 Fax (201) 438-4837  
[www.betson.com](http://www.betson.com)  
(or contact your local Betson office.\*)

### **Warranty and Repair**

Betson Enterprises, Headquarters  
(800) 524-2343 Fax (201) 438-4837  
[www.betson.com](http://www.betson.com)  
(or contact your local Betson office.\*)

### **Betson West – Phoenix**

2633 N. 37th Ave. Suite 7  
Phoenix, AZ 85009  
(602) 442-6630 Fax (602) 442-9501

### **Betson Advance Distributing**

6743 Thompson Rd.  
Syracuse, NY 13211  
(315) 437-2400 Fax (315) 437-6130

### **Betson Baltimore Distributing**

3431-A Benson Ave.  
Baltimore, MD 21227  
(410) 646-4100 Fax (410) 646-7753

### **Betson Midwest**

1158 Tower Lane  
Bensenville, IL 60106  
(630) 238-9400 Fax (630) 238-9409

### **Betson Texas Distributing**

1127 Conveyor Lane  
Dallas, TX 75247  
(214) 638-4900 or (877) 638-4900  
Fax (214) 638-4925