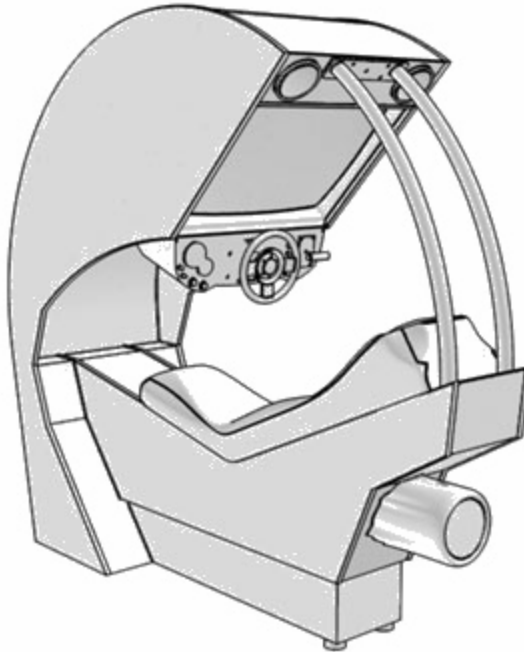


BALLISTICS



USER MANUAL

Version 1 – October 2005



Triotech Amusement Inc.
190 Des Industries Lavaltrie, Quebec (Canada) J5T 3R2
Tel.: 450.586.5009
Toll free: 1-888-IN-LINE-4
Fax: 450.586.0299
e-mail: service@trio-tech.com

BALLISTICS

NEW for the 2003 model!
Ballistics now features
Triotech's incredible Mad
Wave Motion System technology
(patented). This fully immersed
game experience allows the player
to feel the super-boosts,
collisions, the jet-powered
acceleration and the totally
mad vibration of a SONIC
BOOM!



HARDWARE FEATURES

- Unique Cabinet Style
- Network capable with up to 8 units
- Mad Wave Motion Technology
- Coin Operated
- Unattended Game Play
- Suitable for all ages and locations
(no blood, no violence, no weapons)
- Button and throttle controls
- Steering wheel

DIMENSIONS

Length ... 84 inches ... 2.13m
Width ... 27 inches ... 0.68m
Height ... 72 inches ... 1.82m



TABLE OF CONTENT

GENERAL DESCRIPTION	Page 2
BASIC SET-UP	Page 4
NETWORK CONNECTIONS	Page 5
ACCESSING WINDOWS	Page 6
READING COIN METER	Page 7
CALLIBRATING CONTROLS	Page 8
INSTALLING NEW HARD DRIVE	Page 13
COMPUTER CONNECTIONS	Page 14
SOUND AMPLIFIER	Page 15
TECHNICAL SUPPORT COORDINATES	Page 16

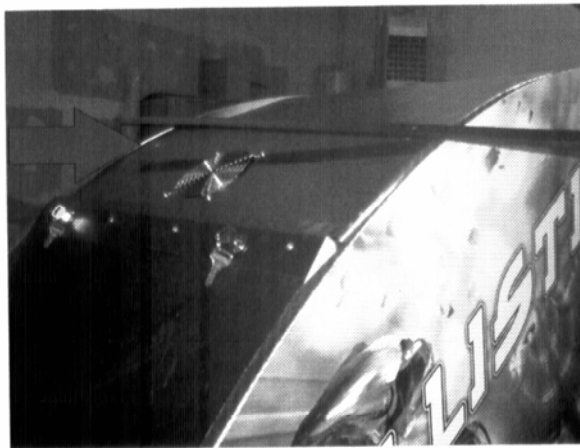




When installing only one machine you must install the lower stabilizing bar with the screws provided.



When 2 machines are together install the upper stabilizing bar provided (If you don't have the stabilizing bar ask your distributor for one)



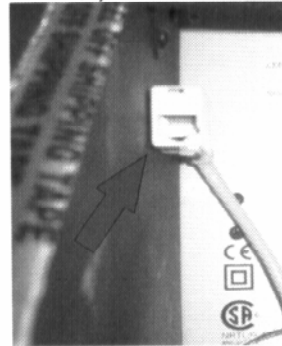
NETWORK CONNECTIONS

How to connect 2 or more machines together



How to connect 2 machines together

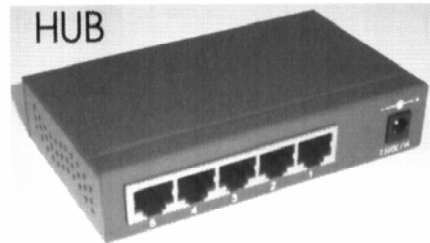
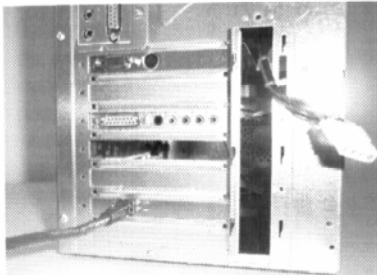
Connect the cross wired network cable between the two computers
(This wire is different from a standard network cable, you can notice that one end is labeled as cross wired)



Connect wire between the two computer

How to connect more than two machines together

Place the hub in any machine.
Connect a network cable from each computers to the Hub.
(make sure you are not using a cross wired cable see picture above)

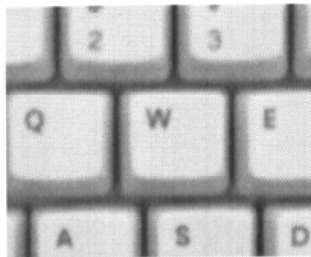


(Some Hub have an unlink connection)

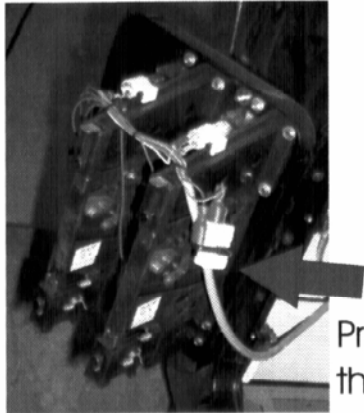
**HOW TO QUIT THE GAME TO ACCESS
WINDOWS 2000**



**Press the Letter W to quit the game
and go back to Windows.
To get back to the game just restart the computer.**

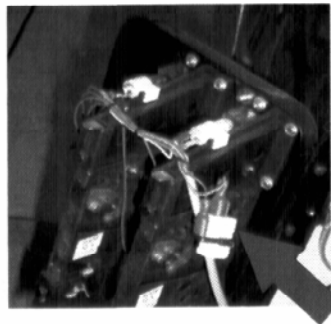


HOW TO READ THE COIN METER



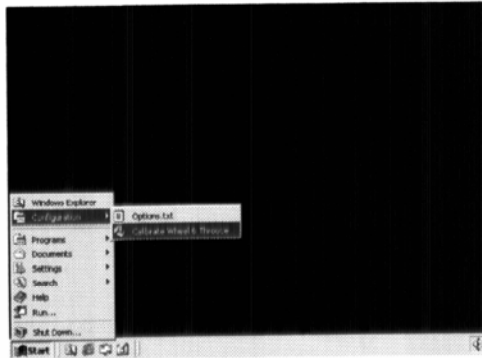
Press the coin meter button to view the coin meter (inside the coin door)

How to set the amount of credit

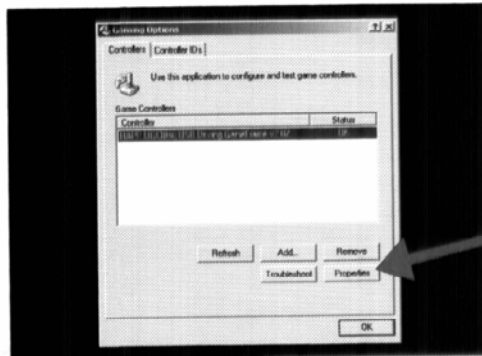


Press the coin meter button (inside the coin door),
Press the booster button to set to the desired credit needed to start the game (1 to 10 coins),
To set to free play (toggle until "press any buttons to play" is displayed at the bottom of the screen (just one selection after 10 credits)

CALIBRATING THE CONTROLS

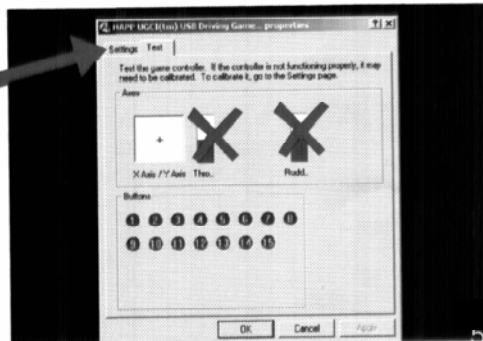


Press :
Start,
Configuration,
Calibrate wheel & throttle



Click:
Properties

Please note that the steering wheel is on the X axis and the throttle is on the Y axis.

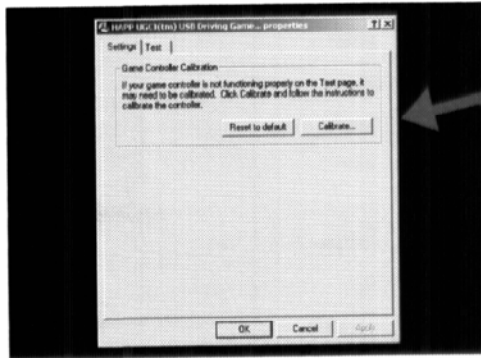


X :NOT IN use

To verify the buttons :

- Button 1 = Booster
- Button 2 = Flip
- Button 3 = Cooler
- Button 4 = View

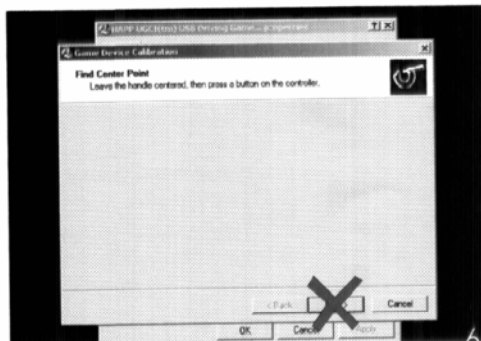
Click: Settings



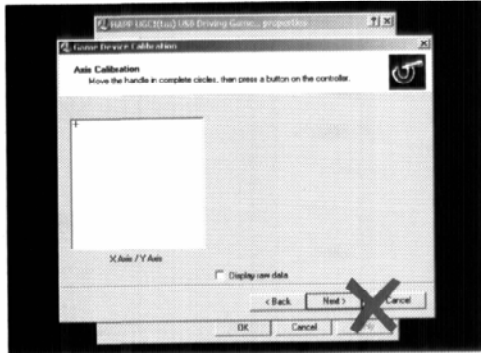
Click:
Calibrate



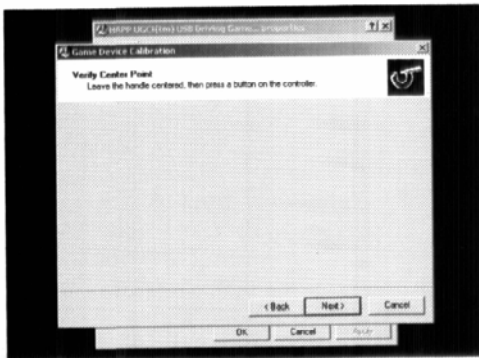
Click:
Next



Important :
You must position the throttle in the middle, between Fast and Slow and make sure the steering is centered.
Do not click NEXT
Press on the booster button.

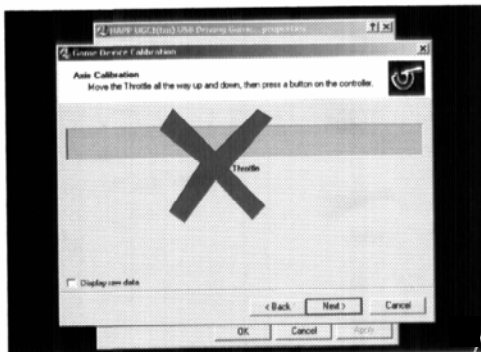


To calibrate turn the wheel all the way to the left and then all the way right at least 3 times then move the throttle up and down at least 3 time. Do not click NEXT, press on the booster button.



Important :

Position the throttle in the middle, between Fast and Slow and make sure the steering is centered. Do not click NEXT Press on the booster button.

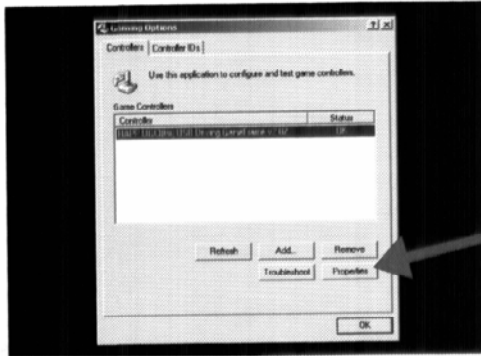


Do not respond to this screen Do not click NEXT, press on the booster button.

CALIBRATING THE CONTROLS

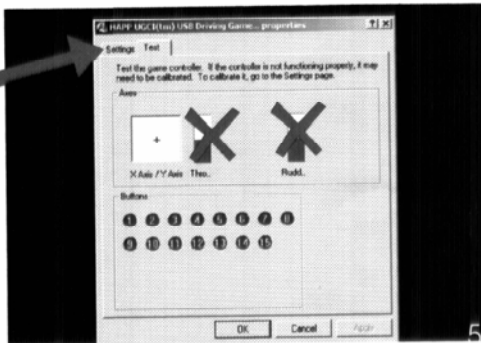


Press :
Start,
Configuration,
Calibrate wheel & throttle



Click:
Properties

Please note that the steering wheel is on the X axis and the throttle is on the Y axis.

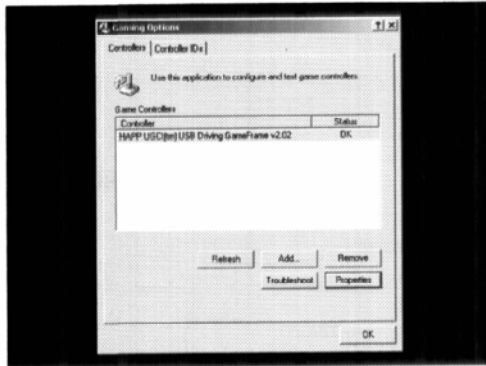


X : NOT IN use

To verify the buttons :

- Button 1 = Booster
- Button 2 = Flip
- Button 3 = Cooler
- Button 4 = View

Click: Settings



Click : OK

INSTRUCTIONS TO INSTALL A NEW HARD DRIVE



FOLLOW THESE IMPORTANT STEP

- 1 -** Replace the hard drive and start the machine
- 2 -** once the game is loaded press on the coin meter switch
(it is the small switch located inside the coin mech door)
- 3 -** Press W (this will quit the game)
- 4 -** Restart the machine

SOUND AMP.

If you don't have sound check

- Is the power in on
- check all the connections
- check the fuse

Note : the 2 wires going to the base shaker are located behind the amp.



Input from
computer

Should be
set between
3 and 5 to
the desired
volume

Should be
set to MAX

Fuse 1.5 amp 250V

Technical Support

190 Des Industries
Lavaltrie, Quebec (Canada)
J5T 3R2

tel.: **450.586.5009**

toll free: **1-888-IN-LINE-4**

fax: **450.586.0299**