

# 4 Opening and closing the doors

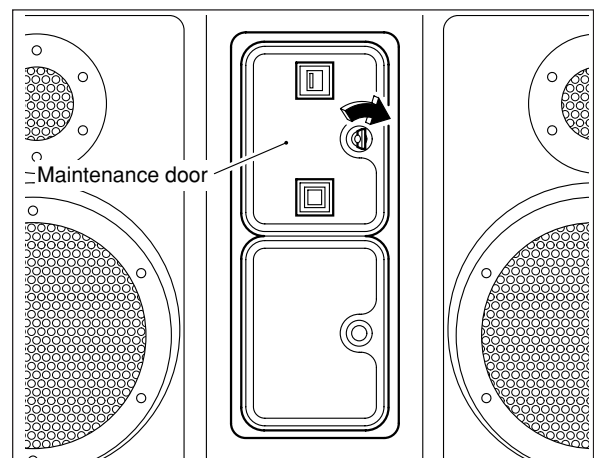
## 4-1 Opening and closing the maintenance door

### ■ How to open the maintenance door

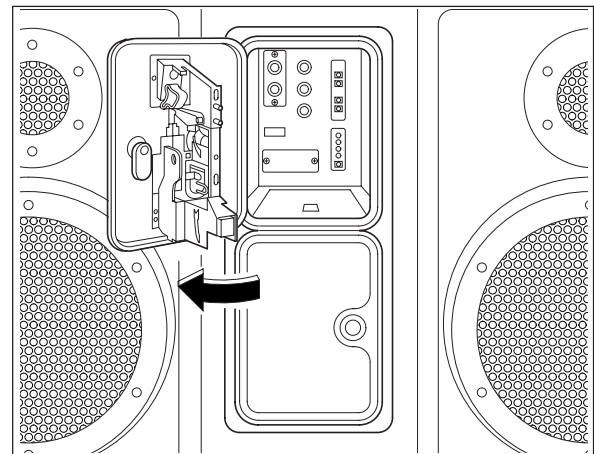


- Take care not to apply any load or impact to the maintenance door when it is open.
- After closing the maintenance door, be sure to check that the door is locked securely.

- 1 Insert the accompanying maintenance key and turn it clockwise.



- 2 Open the maintenance door.



### ■ How to close the maintenance door

- 1 Close the maintenance door.
- 2 Turn the maintenance key counterclockwise and draw it out.

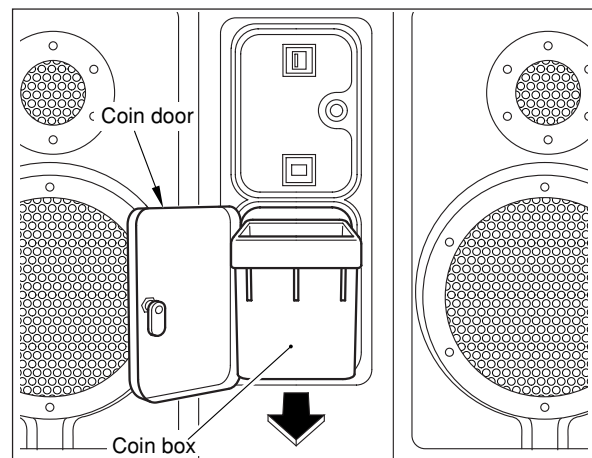
## 4-2 Opening and closing the coin door

### ■ Opening and closing the coin door and removing the coin box — — — — —



- Take care not to apply any load or impact to the coin door when it is open.
- Securely lock the door for protection against burglaries.
- Note that the coin box is considerably heavy to take out if it is full of coins.

- 1 | Insert the attached coin door key in the coin door and turn it clockwise.
- 2 | Open the coin door and take out the coin box.



### ■ Coin counter — — — — —

You will find the coin box when the coin door is opened.  
The coin counter is located under the coin box.

• To move the coin counter onto the service panel.

**MEMO**

